

# THE MORDELL-WEIL SIEVE: PROVING NON-EXISTENCE OF RATIONAL POINTS ON CURVES

NILS BRUIN AND MICHAEL STOLL

ABSTRACT. We discuss the Mordell-Weil sieve as a general technique for proving results concerning rational points on a given curve. In the special case of curves of genus 2, we describe quite explicitly how the relevant local information can be obtained if one does not want to restrict to mod  $p$  information at primes of good reduction. We describe our implementation of the Mordell-Weil sieve algorithm and discuss its efficiency.

## 1. INTRODUCTION

The Mordell-Weil Sieve uses knowledge about the Mordell-Weil group of the Jacobian variety of a curve, together with local information (obtained by reduction mod  $p$ , say, for many primes  $p$ ), in order to obtain strong results on the rational points on the curve.

The most obvious application that also provided the original motivation for this work is the possibility to verify that a given curve does not have any rational points. This is done by deriving a contradiction from the various bits of local information, using the global constraint that a rational point on the curve maps into the Mordell-Weil group. This idea is simple enough (see Section 2), but its implementation in form of an algorithm that runs in reasonable time on a computer is not completely straightforward. The relevant algorithms are discussed in Section 3, and our concrete implementation is described in Section 7. Section 8 contains a discussion of the efficiency of the implementation and gives some timings.

The idea of using this kind of ‘Mordell-Weil sieve’ computation to prove that a given curve does not have rational points appears for the first time in Scharaschkin’s thesis [Sc], who used it in a few examples involving twists of the Fermat quartic. It was then taken up by Flynn [F12] in a more systematic study of genus 2 curves; his selection of examples was somewhat biased, however (in favor of curves he was able to compute with). In our ‘small curves’ project [BS1]

---

*Date:* May 20, 2009.

2000 *Mathematics Subject Classification.* 11D41, 11G30, 11Y50 (Primary); 14G05, 14G25, 14H25, 14H45, 14Q05 (Secondary).

Research of the first author supported by NSERC.

we applied the procedure systematically and successfully to all genus 2 curves  $y^2 = f_6x^6 + \cdots + f_1x + f_0$  with  $f_i \in \{-3, -2, -1, 0, 1, 2, 3\}$  that do not possess rational points.

In this situation, it is not strictly necessary to know a full generating set of the Mordell-Weil group. It is sufficient to know generators of a finite-index subgroup such that the index is coprime to a certain set of primes. This can be checked again by using only local information. In fact the necessary information usually is part of the input for the sieve procedure. This remark is relevant, since one needs to be able to compute canonical heights and to enumerate points on the Jacobian up to a given bound for the canonical height if one wants to obtain generators for the full Mordell-Weil group. The necessary algorithms are currently only available for curves of genus 2, see [St1, St3]. So we can still use the Mordell-Weil sieve to show that there are no rational points on a given curve, even when the genus is  $\geq 3$ . Of course, we still need to know the Mordell-Weil rank and the right number of independent points. See [PSS] for an example where this is applied with a curve of genus 3 to show that there are no rational points satisfying certain congruence conditions.

The approach can be modified so that it can be used to verify that there are no rational points satisfying a given set of congruence conditions or mapping into a certain coset in the Mordell-Weil group. This is what was used in [PSS]. If we can show in addition in some way that in each of the cosets or residue classes considered, there can be at most one rational point, then this provides a way of determining the set of rational points on the curve. Namely, if a given coset or residue class contains a rational point, then we will eventually find it, and we then also know that there are no other rational points in this coset or class. And if there is no rational point in this coset or residue class, then we can hope to verify this by an application of the Mordell-Weil Sieve. In this situation, the remark we made above that it is sufficient to know a finite-index subgroup still applies.

There is one case where we can actually prove that, for a suitable choice of prime  $p$ , no residue class mod  $p$  on the curve can contain more than one rational point. This is the ‘Chabauty situation’, when the Mordell-Weil rank is less than the genus. We can (hope to) find a suitable  $p$ , and then we can (hope to) determine the rational points on our curve as outlined above. This yields a procedure whose termination is not (yet) guaranteed, since it relies on some conjectures. However, the procedure is correct: if it terminates, and it has done so in all examples we tried, then it gives the exact set of rational points on the curve. In the Chabauty context, the sieving idea has already been used in [BE] to rule out rational points in certain cosets. See also [PSS] for some more examples and [Br] for an example that uses ‘deep’ information.

Even when the rank is too large to apply the idea we just mentioned, the sieve can still be used in order to show that any rational point on the curve that we have not found so far must be astronomically huge. This provides at least some kind of moral certainty that there are no other points. In conjunction with (equally huge) explicit bounds for the size of *integral* points, this allows us to show that we know at least all the integral points on our curve, see [BMSST]. For this application, however, we really need to know the full Mordell-Weil group, so with current technology, this is restricted to curves of genus 2.

We discuss these various applications in some detail in Section 4.

In Sections 5 and 6, we discuss how to extract local information that can be used for the sieve, when we do not want to restrict ourselves to just information mod  $p$  for primes  $p$  of good reduction. In these sections, we assume that the curve is of genus 2 and that we are working over  $\mathbb{Q}$ .

As to the theoretical background, we remark here that under a mild finiteness assumption on the Shafarevich-Tate group of the curve's Jacobian variety, the information that can be obtained via the Mordell-Weil sieve is equivalent to the Brauer-Manin obstruction, see [Sc] or [St6].

**Acknowledgments.** We would like to thank Victor Flynn and Bjorn Poonen for useful discussions related to our project. For the computations, the MAGMA [M] system was used.

## 2. THE IDEA

Let  $C/\mathbb{Q}$  be a smooth projective curve of genus  $g \geq 2$  with Jacobian variety  $J$ . (In [St7, St8], we consider more generally a subvariety of an abelian variety. The idea is the same, however.)

Our goal is to show that a given curve  $C/\mathbb{Q}$  does not have rational points. For this, we consider the following commuting diagram, where  $v$  runs through the (finite and infinite) places of  $\mathbb{Q}$ .

$$\begin{array}{ccc} C(\mathbb{Q}) & \xrightarrow{\iota} & J(\mathbb{Q}) \\ \downarrow & & \downarrow \alpha \\ \prod_v C(\mathbb{Q}_v) & \xrightarrow{\iota} & \prod_v J(\mathbb{Q}_v) \end{array}$$

We assume that we know an embedding  $\iota : C \rightarrow J$  defined over  $\mathbb{Q}$  (i.e., we know a  $\mathbb{Q}$ -rational divisor class of degree 1 on  $C$ ) and that we know generators of the Mordell-Weil group  $J(\mathbb{Q})$ . If  $C(\mathbb{Q})$  is empty, then the images of  $\alpha$  and the lower  $\iota$  are disjoint, and conversely.

However, since the sets and groups involved are infinite, we are not able to compute this intersection. Therefore, we replace the groups by finite approximations. Let  $S$  be a finite set of places of  $\mathbb{Q}$  and let  $N \geq 1$  be an integer. Then we consider

$$\begin{array}{ccc} C(\mathbb{Q}) & \xrightarrow{\iota} & J(\mathbb{Q})/NJ(\mathbb{Q}) \\ \downarrow & & \downarrow \alpha \\ \prod_{v \in S} C(\mathbb{Q}_v) & \xrightarrow{\beta} & \prod_{v \in S} J(\mathbb{Q}_v)/NJ(\mathbb{Q}_v) \end{array}$$

Under the assumptions made, we now *can* compute the images of  $\alpha$  and of  $\beta$  and check if they are disjoint. If  $C(\mathbb{Q}) = \emptyset$ , then according to the Main Conjecture of [St6] and the heuristic given in [Po], the two images should be disjoint when  $S$  and  $N$  are large enough. Note that (as shown in [St6]) the two images will be disjoint for some choice of  $S$  and  $N$  if and only if  $\prod_v \iota(C(\mathbb{Q}_v))$  does not meet the topological closure of  $J(\mathbb{Q})$  in  $\prod_p J(\mathbb{Q}_p) \times J(\mathbb{R})/J(\mathbb{R})^0$ , where  $J(\mathbb{R})^0$  denotes the connected component of the origin. This is a stronger condition than the requirement that  $\prod_v \iota(C(\mathbb{Q}_v))$  misses the image of  $J(\mathbb{Q})$ . The conjecture claims that both statements are in fact equivalent.

As a further simplification, we can just use a set  $S$  of primes of good reduction and replace the above diagram by the following simpler one:

$$\begin{array}{ccc} C(\mathbb{Q}) & \xrightarrow{\iota} & J(\mathbb{Q})/NJ(\mathbb{Q}) \\ \downarrow & & \downarrow \alpha \\ \prod_{p \in S} C(\mathbb{F}_p) & \xrightarrow{\beta} & \prod_{p \in S} J(\mathbb{F}_p)/NJ(\mathbb{F}_p) \end{array}$$

Poonen originally formulated his heuristic for this case. However, in practice it appears to be worthwhile to also use ‘bad’ information (coming from primes of bad reduction) and ‘deep’ information (involving parts of the kernel of reduction) in order to keep the running time of the actual sieve computation within reasonable limits. In Sections 5 and 6 below, we show how to obtain this kind of information for curves of genus 2 over  $\mathbb{Q}$ .

### 3. ALGORITHMS

In the following, we assume that we are using the simpler version involving only reduction mod  $p$ , as described at the end of Section 2.

Let  $r$  denote the rank of the Mordell-Weil group  $J(\mathbb{Q})$ . For given set  $S$  and parameter  $N$ , denote by  $A(S, N) \subset J(\mathbb{Q})/NJ(\mathbb{Q})$  the subset of elements mapping into the image of  $C(\mathbb{F}_p)$  in  $J(\mathbb{F}_p)/NJ(\mathbb{F}_p)$  for all  $p \in S$ , in symbols:

$$A(S, N) = \{a \in J(\mathbb{Q})/NJ(\mathbb{Q}) : \alpha(a) \in \text{im}(\beta_{N,p}) \text{ for all } p \in S\}$$

Here,  $\beta_{N,p} : C(\mathbb{F}_p) \rightarrow J(\mathbb{F}_p)/NJ(\mathbb{F}_p)$  denotes the composition of  $\iota : C(\mathbb{F}_p) \rightarrow J(\mathbb{F}_p)$  and the canonical epimorphism  $J(\mathbb{F}_p) \rightarrow J(\mathbb{F}_p)/NJ(\mathbb{F}_p)$ .

The procedure splits into three parts.

(1) **Choice of  $S$**

In the first step, we have to choose a set  $S$  of primes such that we can be reasonably certain that the combined information obtained from reduction mod  $p$  for all  $p \in S$  is sufficient to give a contradiction (or, more generally, to have  $A(S, N)$  equal to the image of  $C(\mathbb{Q})$ , for suitable  $N$ ). In Section 3.1, we explain a criterion that tells us if  $S$  is likely to be good for our purposes. The actual computation of the relevant local information is also part of this step. For each prime  $p \in S$ , we find the abstract finite abelian group  $G'_p$  representing  $J(\mathbb{F}_p)$  (or some other finite quotient of  $J(\mathbb{Q}_p)$ ) and the image  $X'_p \subset G'_p$  of  $\iota : C(\mathbb{F}_p) \rightarrow J(\mathbb{F}_p)$ . We also compute the homomorphism  $\phi_p : J(\mathbb{Q}) \rightarrow G'_p$ . We write  $G_p$  for the image of  $\phi_p$  and denote  $X_p = X'_p \cap G_p$ . In what follows below, we will use  $\#X_p/\#G_p$  as a measure for how much information about rational points on  $C$  can be obtained at  $p$ . Note that it is possible that  $G_p \subset X'_p \subsetneq G'_p$ . In that case,  $\#X'_p/\#G'_p < 1$ , but no element of the Mordell-Weil group can be ruled out from coming from  $C(\mathbb{Q})$ , based on the information at  $p$ . If we were to use this quantity, we would obtain erroneous estimates in the second step. This can then lead to huge sets  $A(S, N)$  in the third step and even to a failure of the computation.

(2) **Choice of  $N$**

In the second step, we fix a target value of  $N$  and determine a way to compute  $A(S, N)$  efficiently. We do that by finding an ordered factorization  $N = q_1 q_2 \cdots q_m$  such that none of the intermediate sets  $A(S, q_1 \cdots q_k)$  becomes too large. This is explained in Section 3.2.

(3) **Computation of  $A(S, N)$**

Finally, we have to actually compute  $A(S, N)$  in a reasonably efficient way. We explain in Section 3.3 how this can be done.

The last two steps can be considered independently from the Mordell-Weil sieve context. Basically, we need a procedure that, given a finite family of surjective group homomorphisms  $\phi_i : \Gamma \rightarrow G_i$  and subsets  $X_i \subset G_i$ , (for  $i \in I$ ) attempts to prove that no element of  $\Gamma$  is mapped into  $X_i$  by  $\phi_i$  for every  $i \in I$ . Here  $\Gamma$  is a finitely generated abelian group and the  $G_i$  are finite abelian groups. In our application,  $\Gamma$  is the Mordell-Weil group, the index set is  $S$ ,  $G_p$  is the image of  $J(\mathbb{Q})$  in  $J(\mathbb{F}_p)$ , and  $X_p = \iota(C(\mathbb{F}_p)) \cap G_p$ .

We give some more details on our actual implementation in Section 7.

**3.1. Choice of  $S$ .** The first task of the algorithm is to come up with a suitable set  $S$  of places. We will restrict to finite places (i.e., primes), but in principle, one could also include information at infinity, which would mean to consider the connected components of  $J(\mathbb{R})$  which meet the image of  $C(\mathbb{R})$  under the embedding  $\iota$ . It is clear that the only possibility to get some interaction between the information at various primes  $p$  (and eventually a contradiction) is when the various group orders  $\#J(\mathbb{F}_p)$  have common factors. This is certainly more likely when these common factors are relatively small. We therefore look for primes  $p$  (of good reduction) such that the group order  $\#J(\mathbb{F}_p)$  is  $B$ -smooth (i.e., with all prime divisors  $\leq B$ ) for some fixed value of  $B$ ; in practice, values like  $B = 100$  or  $B = 200$  lead to good results.

For each such prime, we compute the group structure of  $J(\mathbb{F}_p)$ , i.e., an abstract finite abelian group  $G'_p$  together with an explicit isomorphism  $J(\mathbb{F}_p) \cong G'_p$ . We also compute the images of the generators of  $J(\mathbb{Q})$  in  $G'_p$  and the image of  $C(\mathbb{F}_p)$  in  $G'_p$ . In order to do that, we need to solve roughly  $p$  discrete logarithm problems in  $G'_p$ . Since  $G'_p$  has smooth order, we can use Pohlig-Hellman reduction [PH] to reduce to a number of small discrete log problems. Therefore, this part of the computation is essentially linear in  $p$  in practice. We do need to compute reasonably efficiently in  $J(\mathbb{F}_p)$ , though. If  $C$  is a curve of genus 2, Cantor reduction [Ca] gives us a way to do that. To fix notation, let  $W$  denote an effective canonical divisor on  $C$ . Cantor reduction takes as input a degree 0 divisor in the form  $D - dW$ , where  $D$  is an effective divisor of degree  $2d$ , and computes a unique divisor  $D_0$  of degree 2 such that

$$[D - dW] = [D_0 - W],$$

with the convention that if  $D - dW$  is principal, then  $D_0 = W$ . Adding two divisor classes represented as  $[D_1 - W]$  and  $[D_2 - W]$  can be accomplished by feeding the divisor  $(D_1 + D_2) - 2W$  into the reduction algorithm.

Cantor reduction also allows us to map elements from  $C(\mathbb{F}_p)$  into  $J(\mathbb{F}_p)$ . If  $\iota$  is given by a rational base point  $P_0 \in C(\mathbb{Q})$ , i.e.,  $\iota(P) = [P - P_0]$ , and  $\bar{P}_0$  is the reduction of  $P_0$  modulo  $p$ , then for each  $\bar{P} \in C(\mathbb{F}_p)$ , we have  $\iota(\bar{P}) = [\bar{P} + \bar{P}' - \bar{W}]$ , where  $\bar{P}'$  is the hyperelliptic involute of  $\bar{P}_0$ . In this case, we already get  $\iota(\bar{P})$  as a reduced divisor class. Otherwise,  $\iota$  is given by  $\iota(P) = [P - D_3 + W]$ , where  $D_3$  is a rational effective divisor of degree 3. Then we can compute a reduced representative of  $\iota(\bar{P})$  by performing Cantor reduction on  $(\bar{P} + \bar{D}'_3) - 2W$ .

As mentioned above, we finally replace  $G'_p$  by  $G_p = \phi_p(J(\mathbb{Q}))$ , and we let  $C_p$  be the intersection of the image of  $C(\mathbb{F}_p)$  in  $G'_p$  with  $G_p$ . We then use  $\phi_p$  to denote the surjective homomorphism  $\phi_p : J(\mathbb{Q}) \rightarrow G_p$ .

In order to determine whether we have collected enough primes, we compute the expected size of the set  $A(S, N)$ , where  $S$  is the set of all  $p$  collected so far. We follow Poonen [Po] and assume that the images of the  $C(\mathbb{F}_p)$  in  $J(\mathbb{F}_p)$  are random

and independent for the various  $p$ . This leads to the expected value

$$n(S, N) = \#(J(\mathbb{Q})/NJ(\mathbb{Q})) \prod_{p \in S} \frac{\#C_{N,p}}{\#(G_p/NG_p)}$$

where  $C_{N,p}$  is the image of  $C_p$  in  $G_p/NG_p$ .

In principle, we would like to find the value of  $N$  that minimizes  $n(S, N)$  for the given set  $S$ . However, this would lead to much too involved a computation. We therefore propose to proceed as follows. Write

$$\prod_{p \in S} J(\mathbb{F}_p) \cong \mathbb{Z}/N_1\mathbb{Z} \times \mathbb{Z}/N_2\mathbb{Z} \times \cdots \times \mathbb{Z}/N_l\mathbb{Z}$$

where  $N_j$  divides  $N_{j+1}$  ( $j = 1, 2, \dots, l-1$ ). Then we take  $N = N_{l-r-1-j}$  for  $j = 0, 1, 2, 3$  as values that are likely to produce a small  $n(S, N)$ . The reason for this choice is the following. Usually the target groups will be essentially cyclic, and the kernel of the homomorphism  $J(\mathbb{Q}) \rightarrow J(\mathbb{F}_p)$  will be a random subgroup of index  $\#J(\mathbb{F}_p)$  and more or less cyclic quotient. If we take a prime number  $q$  for  $N$  and the Mordell-Weil rank is  $r$ , then we obtain a random codimension one subspace of  $\mathbb{F}_q^r$ . Unless  $q$  is very small, it will be rather unlikely that these subspaces intersect in a nontrivial way, unless there are more than  $r$  of them. So for every prime power dividing our  $N$ , we want to have more than  $r$  factors in the product above that have order divisible by the prime power. So we should restrict to divisors of  $N_{l-r-1}$ . Taking  $N_{l-r-1-j}$  with  $j > 0$ , we make sure to get even more independent factors.

By the same token, any subgroup  $L \subset J(\mathbb{Q})$  such that we can expect to get sufficient information on the image of  $C(\mathbb{Q})$  in  $J(\mathbb{Q})/L$  will be very close to  $NJ(\mathbb{Q})$  for some  $N$ : as soon as the various bits of information interact, we will have exhausted all “directions” in the dual of  $J(\mathbb{Q})/NJ(\mathbb{Q})$ , and the intersection of the kernels of the relevant maps will be close to  $NJ(\mathbb{Q})$ . This also explains why our approach to the computation of  $A(S, N)$  (which we describe below in Section 3.3) works quite well.

Note that by taking  $S$  (and perhaps also  $B$ ) large, we will get large values for the number  $l$  of factors. Once  $l \gg r$ , the image of the Mordell-Weil group  $J(\mathbb{Q})$  in this product will be rather small, so that we can expect it to eventually miss the image of the curve. Poonen’s heuristic [Po] makes this argument precise.

We continue collecting primes into  $S$  until we find a sufficiently small  $n(S, N)$ . In practice, it appears that  $n(S, N) < \varepsilon = 10^{-2}$  is sufficient. Note that if the final sieve computation is unsuccessful (and does not lead to the discovery of a rational point on  $C$ ), then we can enlarge  $S$  until  $n(S, N)$  gets sufficiently smaller and repeat the sieve computation.

**3.2. Choice of  $N$ .** Once  $S$  is chosen and the relevant information is computed, we can forget about the original context and consider the following more abstract situation.

We are given a finitely generated abstract abelian group  $\Gamma$  of rank  $r$ , together with a finite family  $(G_i, \phi_i, X_i)_{i \in I}$  of triples, where  $G_i$  is a finite abstract abelian group,  $\phi_i : \Gamma \rightarrow G_i$  is a surjective homomorphism, and  $X_i \subset G_i$  is a subset. In practice,  $\Gamma$  and the  $G_i$  are given as a product of cyclic groups,  $\phi_i$  is given by the images of the generators of  $\Gamma$ , and  $X_i$  is given by enumerating its elements. The following definition generalizes  $A(S, N)$ .

**Definition 3.1.** Let  $L \subset \Gamma$  be a subgroup of finite index. We set  $G_{L,i} = G_i/\phi_i(L)$ , write  $X_{L,i}$  for the image of  $X_i$  in  $G_{L,i}$ , and denote by  $\phi_{L,i}$  the induced homomorphism  $\Gamma/L \rightarrow G_{L,i}$ . We define

$$A(L) = \{\gamma \in \Gamma/L : \phi_{L,i}(\gamma) \in X_{L,i} \text{ for all } i \in I\}$$

and its expected size

$$n(L) = \#(\Gamma/L) \prod_{i \in I} \frac{\#X_{L,i}}{\#G_{L,i}}.$$

Now the task is as follows.

**Problem 3.2.**

- (1) Find a number  $N$  such that  $A(N\Gamma)$  has a good chance of being empty and such that  $A(N\Gamma)$  can be computed efficiently.
- (2) Compute  $A(N\Gamma)$ .

In our application,  $\Gamma = J(\mathbb{Q})$ ,  $I = S$ , and for  $p \in S$ ,  $G_p$  and  $\phi_p$  are as before, and  $X_p = C_p$ .

Since we may have to take  $N$  fairly large ( $N \approx 10^6$  is not uncommon, and values  $\approx 10^{12}$  or even  $\approx 10^{100}$  do occur in practice in our applications), it would not be a good idea to enumerate the (roughly  $N^r$ ) elements of  $\Gamma/N\Gamma$  and check for each of them whether it satisfies the conditions. Instead, we build up  $N$  multiplicatively in stages: we compute  $A(N_j\Gamma)$  successively for a sequence of values

$$N_0 = 1, \quad N_1 = q_1, \quad N_2 = N_1q_2, \quad N_3 = N_2q_3, \quad \dots, \quad N_m = N_{m-1}q_m = N$$

where the  $q_k$  are the prime divisors of  $N$ . We want to choose the sequence  $(q_k)$  (and therefore  $N$ ) in such a way that the intermediate sets  $A(N_k\Gamma)$  are likely to be small. For this, we use again the expected size  $n(N_k\Gamma)$  of  $A(N_k\Gamma)$ . By a best-first search, we find the sequence  $(q_k)_{k=1,\dots,m}$  such that

- (i)  $n(\left(\prod_{k=1}^m q_k\right)\Gamma)$  is less than a target value  $\varepsilon_1 < 1$  (for example, 0.1), and
- (ii)  $\max\{n(N_k\Gamma) : 0 \leq k \leq m\}$  is minimal (where  $N_k = \prod_{j=1}^k q_j$ ).



From the first step, which provides the input, we can deduce a number  $M$  (usually  $M = N_{l-1-r-j}$  for some small value of  $j$ , in the notation used above) such that all reasonable choices for  $N$  should divide  $M$ . The following procedure returns a suitable sequence  $(q_1, \dots, q_m)$ .

---

**FindQSequence:**

```

 $c := \{(\(), 1, 1.0)\}$     //  $()$  is an empty sequence of  $q_k$ , 1 is  $N$ , 1.0 is  $n(N\Gamma)$ 
while  $c \neq \emptyset$ :
   $(s, N, n) :=$  triple in  $c$  with minimal  $n$ 
  remove this triple from  $c$ 
  if  $n < \varepsilon$ :    // success?
    return  $s$ 
  end if
  // compute the possible extensions of  $s$  and add them to the list
   $c := c \cup \{(\text{append}(s, q), Nq, n(Nq\Gamma)) : q \text{ prime}, Nq \mid M\}$ 
end while
// if we leave the while loop here, the target was not reached
return 'failure'

```

---

When we extend  $c$ , we can restrict to the triples  $(s', N', n')$  such that  $N'$  does not occur as the second component of a triple already in  $c$ . (Since in this case, we have already found a ‘better’ sequence leading to this  $N'$ .)

If the information given by  $(G_i, \phi_i, X_i)_{i \in I}$  is sufficient (as determined in the first step), then this procedure usually does not take much time (compared to the computation of the ‘local information’ like the image of  $C(\mathbb{F}_p)$  in  $J(\mathbb{F}_p)$ ). In any case, if we made sure in the first step that there is some  $M$  such that  $n(M\Gamma) < \varepsilon_1$ , then FindQSequence will not fail.

In this step and also in the first step, it is a good idea to keep the orders of the cyclic factors of the groups  $G_i$  and the numbers  $N$  in factored form, and only convert the greatest common divisors of  $N$  with the relevant group orders into actual integers.

**3.3. Computation of  $A(N\Gamma)$ .** Now we have fixed the sequence  $(q_k)_{j=1, \dots, m}$  of primes whose product is  $N$ . In the last part of the algorithm, we have to compute the set  $A(N\Gamma)$  (and hope to find that it is empty or sufficiently small, depending on the intended application).

This is done iteratively, by successively computing  $A(N_k\Gamma)$ , where  $N_k = \prod_{j=1}^k q_j$ . We start at  $k = 0$  and initialize  $A(N_0\Gamma) = A(\Gamma) = \{0\} \subset \Gamma/\Gamma$ . Then, assuming we know  $A(N_{k-1}\Gamma)$ , we compute  $A(N_k\Gamma)$  as follows.

We first find the triples  $(G_i, \phi_i, X_i)$  that can possibly provide new information. The relevant condition is that  $v_{q_k}(e_i) \geq v_{q_k}(N_k)$ , where  $e_i$  is the exponent of the group  $G_i$ . For these  $i$ , we compute the group  $G_{N_k\Gamma, i}$ , the image  $X_{N_k\Gamma, i}$  of  $X_i$  in this group and the homomorphism  $\phi_{N_k\Gamma, i} : \Gamma/N_k\Gamma \rightarrow G_{N_k\Gamma, i}$ .

The most obvious approach now would be to take each  $\gamma \in A(N_{k-1}\Gamma)$ , run through its various lifts to  $\Gamma/N_k\Gamma$  and check for each lift if it is mapped into  $X_{N_k\Gamma, i}$  under  $\phi_{N_k\Gamma, i}$ . The complexity of this procedure is  $\#A(N_{k-1}\Gamma) \cdot q_k^r$  times the average number of tests we have to make (we disregard possible torsion in  $\Gamma$ , which will not play a role once  $N_{k-1}$  is large enough). Unless  $r$  is very small, the procedure will be rather slow when the intermediate sets  $A(N_k\Gamma)$  get large.

In order to improve on this, we split the inclusion  $N_k\Gamma \subset N_{k-1}\Gamma$  into several stages:

$$N_{k-1}\Gamma = L_0 \supset L_1 \supset \cdots \supset L_t = N_k\Gamma.$$

Note that the quotient  $N_{k-1}\Gamma/N_k\Gamma$  is isomorphic to  $(\mathbb{Z}/q_k\mathbb{Z})^r$  (again disregarding torsion in  $\Gamma$ ), so we can hope to get up to  $r$  intermediate steps. We now proceed as follows.

**PrepareLift( $k$ ):**

```

 $j := 1; L_0 := N_{k-1}\Gamma$  // initialize
 $I' := \{i \in I : v_{q_k}(e_i) \geq v_{q_k}(N_k)\}$  // the relevant subset of  $I$ 
while  $I' \neq \emptyset$ :
  // list the possible subgroups for the next step
   $\Lambda := \{L_{j-1} \cap \ker(\phi_i) : i \in I'\}$ 
  for  $L \in \Lambda$ :
    // compute a measure of how 'good' each subgroup is
     $n(L_{j-1}, L) := (L_{j-1} : L) \prod_{i \in I'} \frac{\#X_{L,i}}{\#X_{L_{j-1},i}} \frac{1}{(\phi_i(L_{j-1}) : \phi_i(L))}$ 
  end for
   $L_j :=$  the  $L \in \Lambda$  that has the smallest  $n(L_{j-1}, L)$ 
  // record the  $i \in I'$  that contribute to this step
   $I_j := \{i \in I' : \phi_i(L_j) \neq \phi_i(L_{j-1})\}$ 
   $I' := \{i \in I' : \phi_i(L_j) \notin N_k G_i\}$  // update  $I'$ 
   $j := j + 1$ 
end while
if  $j < r$ :
  // fill the remaining gap to  $N_k\Gamma$ 
   $L_{j+1} := N_k\Gamma; I_{j+1} := I'; t := j + 1$ 
else
   $t := j$ 

```

end if

---

The quantity  $n(L_{j-1}, L)$  that we compute in the algorithm above is the expected number of “offspring” that an element of  $A(L_{j-1})$  generates in  $A(L)$ .

We then successively compute  $A(L_1), \dots, A(L_t) = A(N_k\Gamma)$  in the same way as described above for the one-step procedure:

---

```

Lift( $k$ ):
  // note that  $A(L_0) = A(N_{k-1}\Gamma)$ 
  for  $j = 1, \dots, t$ :
     $A(L_j) := \emptyset \subset \Gamma/L_j$ 
    for  $a \in A(L_{j-1})$ :
       $a' :=$  a representative of  $a$  in  $\Gamma/L_j$ 
      for  $l \in L_{j-1}/L_j$ :
        if  $\forall i \in I_j : \phi_{L_j,i}(a' + l) \in X_{L_j,i}$ :
           $A(L_j) := A(L_j) \cup \{a' + l\}$ 
        end if
      end for
    end for
  end for
  // now  $A(N_k\Gamma) = A(L_t)$ 
  return

```

---

In practice, `PrepareLift` and `Lift` together form one subroutine, whose input is  $(N, q, A) = (N_{k-1}, q_k, A(N_{k-1}\Gamma))$  (together with the global data  $\Gamma$  and  $(G_i, \phi_i, X_i)_{i \in I}$ ) and whose output is  $A(Nq\Gamma)$  (with  $Nq = N_k$ ).

The complexity of the lifting step is now

$$\sum_{j=1}^t \#A(L_{j-1})(L_{j-1} : L_j) \approx \#A(N_{k-1}\Gamma) \sum_{j=1}^t (L_{j-1} : L_j) \prod_{i=1}^{j-1} n(L_{i-1}, L_i).$$

In the worst case, we have  $n(L_{j-1}, L_j) = (L_{j-1} : L_j)$ ; then the second factor is at most  $q_k + q_k^2 + \dots + q_k^r < \frac{q_k}{q_k-1} q_k^r$ ; this is not much worse than the factor  $q_k^r$  we had before. Usually, however, and in particular when  $N_{k-1}$  is already fairly large, the numbers  $n(L_{j-1}, L_j)$  will be much smaller than  $(L_{j-1} : L_j)$ ; also we should have  $t = r$  and  $(L_{j-1} : L_j) = q_k$ , so that the complexity is essentially  $\#A(N_{k-1}\Gamma)q_k$ . As an additional benefit, we distribute the tests we have to make over the intermediate steps, so that the average number of tests in the innermost loop will be smaller than when going directly from  $N_{k-1}\Gamma$  to  $N_k\Gamma$ .

In this way, it is possible to compute these sets even when  $r$  is not very small. For example, in order to find the integral solutions of  $\binom{y}{2} = \binom{x}{5}$  (see [BMSST]), it was necessary to perform this kind of computation for a group of rank 6, and this was only made possible by our improvement of the lifting step. As another example, one of the two rank 4 curves that had to be dealt with by the Mordell-Weil sieve in our experiment [BS1] took the better part of a day with the implementation we had at the time (which was based on the “obvious approach” mentioned above). With the new method, this computation takes now less than 15 minutes.

If we find that  $A(N_k\Gamma) = \emptyset$  for some  $k \leq m$ , then we stop. In the context of our application, this means that we have proved that  $C(\mathbb{Q}) = \emptyset$  as well. Otherwise, we can check to see if the remaining elements in  $A(N\Gamma)$  actually come from rational points by computing the element of  $J(\mathbb{Q})$  of smallest height that is in the corresponding coset. It is usually a good idea to first do some more mod  $p$  checks so that one can be certain that the point in  $J(\mathbb{Q})$  really gives rise to a point in  $C(\mathbb{Q})$ . If we do not find a rational point on  $C$  in this way, then we can increase  $S$  and decrease  $\varepsilon$  and  $\varepsilon_1$  and repeat the computation.

Let us also remark here that the lifting step can easily be parallelized, since we can compute the “offspring” of the various  $a \in A(N_{k-1}\Gamma)$  independently. After the preparatory computation in `PrepareLift` has been done, we can split  $A(N_{k-1}\Gamma)$  into a number of subsets and give each of them to a separate thread to compute the resulting part of  $A(N_k\Gamma)$ . Then the results are collected, we check if the new set is empty, and if it is not, we repeat this procedure with the next lifting step.

## 4. APPLICATIONS

**4.1. Non-Existence of Rational Points.** The main application we had in mind (and in fact, the motivation for developing the algorithm described in this paper) is in the context of our project on deciding the existence of rational points on all ‘small’ genus 2 curves, see the report [BS1].

Out of initially about 200 000 isomorphism classes of curves, there are 1492 that are undecided after a search for rational points, checking for local points, and a 2-descent [BS2]. We applied our algorithm to these curves and were able to prove for all of them that they do not have rational points. For some curves, we needed to assume the Birch and Swinnerton-Dyer conjecture for the correctness of the rank of the Mordell-Weil group.

For the curves whose Jacobians have rank at most 2, we originally only used ‘good’ and ‘flat’ information, i.e., groups  $J(\mathbb{F}_p)$  for primes  $p$  of good reduction. For ranks 3 and 4 (no higher ranks occur), we also used ‘bad’ and ‘deep’ information, as described in Sections 5 and 6 below. The running time of the Magma implementation of the Mordell-Weil sieve algorithm we had at the time was about one day

for all 1492 curves (on a 1.7 GHz machine with 512 MB of RAM). Two thirds of that time was taken by one of the two rank 4 curves, and most of the remaining time was used for the 152 rank 3 curves.

With the current implementation discussed in Section 7 below, the overall running time (now on a 2.0 GHz machine with 4 GB of RAM) is about two and a half hours. For a detailed discussion of the timings, see Section 8.

**4.2. Finding points.** Instead of proving that no rational points on  $C$  exist, we can also use the Mordell-Weil sieve idea in order to *find* rational points on  $C$  up to very large height. When the rank is less than the genus, we can even combine the Mordell-Weil sieve with Chabauty's method in order to compute the set of rational points on  $C$  exactly, see Section 4.4 below.

We want to find the rational points on  $C$  up to a certain (large) logarithmic height bound  $H$ . We assume that we know the height pairing matrix for the generators of  $J(\mathbb{Q})$  and a bound for the difference between naive and canonical height on  $J(\mathbb{Q})$ . See [St1, St3] for algorithms that provide these data in the case of genus 2 curves. From this information and the embedding  $C \rightarrow J$ , we can then compute constants  $\delta$  and  $d$  such that  $\hat{h}(\iota(P)) \leq dh(P) + \delta$  for all  $P \in C(\mathbb{Q})$ . Here  $\hat{h}$  denotes the canonical height on  $J(\mathbb{Q})$  and  $h$  denotes a suitable height function on the curve. The upshot of this is that  $h(P) \leq H$  implies  $\hat{h}(\iota(P)) \leq H' = dH + \delta$ .

Note that in many cases when we want to find all rational points up to height  $H$ , we already know a rational point  $P_0$  on  $C$ . Then we can just use  $P \mapsto [P - P_0]$  for the embedding  $\iota$ .

We now proceed as before: we find a suitable set  $S$  of primes and a number  $N$  and compute  $A(S, N) \subset J(\mathbb{Q})/NJ(\mathbb{Q})$ . For the purposes of this application, we require  $N$  to be divisible by the exponent of the torsion group  $J(\mathbb{Q})_{\text{tors}}$  and to be such that  $N^2 > 4H'/m$ , where  $m$  is the minimal canonical height of a non-torsion point in  $J(\mathbb{Q})$ . These conditions imply that if  $Q, Q' \in J(\mathbb{Q})$  are such that  $Q - Q' \in NJ(\mathbb{Q})$  and  $\hat{h}(Q), \hat{h}(Q') \leq H'$ , then  $Q = Q'$ . In other words, each coset of  $NJ(\mathbb{Q})$  in  $J(\mathbb{Q})$  contains at most one point of canonical height  $\leq H'$ .

We do not necessarily expect  $A(S, N)$  to be empty now. However, by the preceding discussion, each element of  $A(S, N)$  corresponds to at most one point in  $C(\mathbb{Q})$  of height  $\leq H$ . Therefore we consider the elements of  $A(S, N)$  in turn (we expect them to be few in number), and for each of them, we do the following. First we check whether there is an element  $Q$  in the corresponding coset of  $NJ(\mathbb{Q})$  such that  $\hat{h}(Q) \leq H'$ . If this is not the case, we discard the element. Otherwise, there is only one such  $Q$ , and we check for some more primes  $p \notin S$  whether the image of  $Q$  in  $J(\mathbb{F}_p)$  is in the image of  $C(\mathbb{F}_p)$ . Note that we can perform these tests quickly only based on the representation of  $Q$  as a linear combination of the generators of  $J(\mathbb{Q})$ : we reduce the generators mod  $p$  and compute the reduction of  $Q$  as a

linear combination of the reduced generators. Depending on  $H'$ , we can determine such a set of primes beforehand, with the property that a point  $Q \in J(\mathbb{Q})$  with  $\hat{h}(Q) \leq H'$  that ‘survives’ all these tests must be in  $\iota(C(\mathbb{Q}))$ , see the lemma below. So if  $Q$  fails one of the tests, we discard it, otherwise we compute  $Q$  as an explicit point and find its preimage in  $C(\mathbb{Q})$  under  $\iota$ .

**Lemma 4.1.** *Let  $P_0 \in C(\mathbb{Q})$  and write  $x(P_0) = (a : b)$  with coprime integers  $a, b$ . Let  $p_1, p_2, \dots, p_m$  be primes of good reduction such that*

$$p_1 p_2 \cdots p_m > e^{H'+\gamma} \max\{|a|, |b|\}^2$$

*and such that  $P_0$  and its hyperelliptic conjugate  $\bar{P}_0$  are distinct mod some  $p_{j_0}$  if they are distinct in  $C(\mathbb{Q})$ . Here  $\gamma$  is a bound for the difference  $h - \hat{h}$  between naive and canonical height on  $J(\mathbb{Q})$ . We take  $\iota : P \mapsto [P - P_0]$ .*

*If  $Q \in J(\mathbb{Q})$  satisfies  $\hat{h}(Q) \leq H'$  and is such that the reduction of  $Q$  mod  $p_j$  is in  $\iota(C(\mathbb{F}_{p_j}))$  for all  $1 \leq j \leq m$ , then  $Q \in \iota(C(\mathbb{Q}))$ .*

*Proof.* Let  $(k_1 : k_2 : k_3 : k_4)$  be the image of  $Q$  on the Kummer surface of  $J$ , with coprime integers  $k_j$ . If  $Q$  mod  $p_j$  is on the image of the curve, then  $p_j$  divides  $k_1 b^2 - k_2 ab + k_3 a^2$ . This integer has absolute value at most  $e^{H'+\gamma} \max\{|a|, |b|\}^2$ , so if it is divisible by  $p_1, \dots, p_m$ , it must be zero. This implies that  $Q = [P - P_0]$  or  $Q = [P - \bar{P}_0]$  for some  $P \in C(\mathbb{Q})$ . If  $P_0 \neq \bar{P}_0$ , these two cases can be distinguished mod  $p_{j_0}$ .  $\square$

The test whether a given coset of  $NJ(\mathbb{Q})$  contains a point of canonical height  $\leq H'$  comes down to a ‘closest vector’ computation with respect to the lattice  $(NJ(\mathbb{Q}), \hat{h})$ . Depending on the efficiency of this operation, we can start eliminating elements from  $A(S, N_k)$  already at some earlier stage of the computation of  $A(S, N)$ , thus reducing the effort needed for the subsequent stages of the procedure.

If we want to reach a *very* large height bound, then we should at some point switch over to the variant of the sieving procedure described in Section 4.3 below.

Of course, there is a simpler alternative, which is to enumerate all lattice points in  $(J(\mathbb{Q})/J(\mathbb{Q})_{\text{tors}}, \hat{h})$  of norm  $\leq H'$  and then checking all corresponding points in  $J(\mathbb{Q})$  whether they are in the image of  $\iota$ . (For this test, one conveniently uses reduction mod  $p$  again, for a suitable set of primes  $p$ .) Which of the two methods will be more efficient will depend on the curve in question and on the height bound  $H$ . If the curve is fixed, then we expect our Mordell-Weil sieve method to be more efficient than the short vectors enumeration when  $H$  gets large. The reason for this is that once  $S$  and  $N$  are sufficiently large, the set  $A(S, N)$  is expected to be uniformly small (most of its elements should come from rational points on  $C$ ), and so the computation of  $A(S, N)$  for large  $N$  will not take much

additional time. On the other hand, the number of vectors of norm  $\leq H'$  will grow like a power of  $H'$ , and the enumeration will eventually become infeasible.

**4.3. Integral Points on Hyperelliptic Curves.** What the preceding application really gives us is a lower bound  $H$  for the logarithmic height of any rational point that we do not know (and therefore believe does not exist). If we can produce such a bound in the order of  $H = 10^k$  with  $k$  in the range of several hundred, then we can combine this information with upper bounds for integral points that can be deduced using linear forms in logarithms and thus determine the set of integral points on a hyperelliptic curve: if  $C : y^2 = f(x)$  is a hyperelliptic curve over  $\mathbb{Q}$ , then it is possible to compute an upper bound  $\log |x| \leq H$  that holds for integral points  $(x, y) \in C$ , where  $H$  is usually of a size like that mentioned above. See Sections 3–9 in [BMSST].

With the procedure we have described here, it is feasible to reach values of  $N$  in the range of  $10^{100}$ , corresponding to  $H \approx 10^{200}$ . However, this is usually not enough — the upper bounds provided by the methods described in [BMSST] are more like  $10^{600}$ . The part of the computation that dominates the running time is the computation of the image of  $C(\mathbb{F}_p)$  in the abstract finite abelian group representing  $J(\mathbb{F}_p)$ . To close the gap, we therefore switch to a different sieving strategy that avoids having to compute all these roughly  $p$  discrete logarithms in  $J(\mathbb{F}_p)$ . We assume that we know a subgroup  $L \subset J(\mathbb{Q})$  (initially this is  $NJ(\mathbb{Q})$ ) such that the image of  $C(\mathbb{Q})$  in  $J(\mathbb{Q})/L$  is given by rational points we already know on  $C$ . We then try to find a smaller subgroup  $L'$  with the same property. Let  $q$  be a prime of good reduction, and recall the notation  $\phi_q : J(\mathbb{Q}) \rightarrow J(\mathbb{F}_q)$  for the reduction homomorphism. Let  $W \subset J(\mathbb{Q})$  be the image of the known rational points on  $C$ , let  $L' = L \cap \ker \phi_q$ , and take  $R \subset J(\mathbb{Q})$  to be a complete set of representatives of the *nontrivial* cosets of  $L'$  in  $L$ . We can now check for each  $w \in W$  and  $r \in R$  whether  $\phi_q(w + r) \notin \iota(C(\mathbb{F}_q))$ . If this is the case, then  $W$  will also represent the image of  $C(\mathbb{Q})$  in  $J(\mathbb{Q})/L'$ . Note that this test does not require the computation of a discrete logarithm. We still need to find the discrete logarithms of the images under  $\phi_q$  of our generators of the Mordell-Weil group in order to find the kernel of  $\phi_q$ , but this is a small fixed number of discrete log computations for each  $q$ .

Since  $\#C(\mathbb{F}_q)/\#J(\mathbb{F}_q) \approx 1/q$  by the Weil conjectures, the chance that we are successful in replacing  $L$  with  $L'$  is roughly  $(1 - \frac{1}{q})^{\#W((L:L')-1)}$ . This will be very small when  $\#W(L : L')$  is much larger than  $q$ . Therefore we try to pick  $q$  such that  $L/(L \cap \ker \phi_q)$  is nontrivial, but comparable with  $q$  in size. A necessary condition for this is that the part of the group order of the image of  $\phi_q$  that is coprime to the index of  $L$  in  $J(\mathbb{Q})$  is  $\ll q$ . Since it is much faster to compute  $\#J(\mathbb{F}_q)$  than it is to compute  $\phi_q$  and its image and kernel, we simply check  $\#J(\mathbb{F}_q)$  instead. When  $q$  passes this test, we do the more involved computation of the group structure

of  $J(\mathbb{F}_q)$  and the images of the generators of  $J(\mathbb{Q})$  in the corresponding abstract group, so that we can find the kernel of  $\phi_q$  and check the condition on  $(L : L')$ . If  $q$  passes also this test, we check if we can replace  $L$  by  $L'$ . Of course, we can abort this computation (and declare failure) as soon as we find some  $w + r$  as above such that  $w + r$  maps into  $\iota(C(\mathbb{F}_q))$ . See Section 11 of [BMSST]. The idea for this second sieving stage is due to Samir Siksek.

If  $N$  is sufficiently large, then we will have a good chance of finding enough primes  $q$  that allow us to go to a subgroup of larger index. Also, once we have been successful with a number of primes, more primes might become available for future steps, since the index of  $L \cap \ker \phi_q$  in  $L$  may have become smaller.

In the two examples treated in [BMSST], this second stage of the sieving procedure was successful in reaching a subgroup of sufficiently large index (up to  $10^{1800}$ ) to be able to conclude that any putative unknown integral point must be so large as to violate the upper bounds obtained earlier.

**4.4. Combination with Chabauty’s method.** Chabauty originally came up with his method in [Ch] in order to prove a special case of Mordell’s Conjecture. More recently, it has been developed into a powerful tool that allows us in many cases to determine the set of rational points on a given curve, see for example [Co, F11, St5, McCP]. We can combine it with the Mordell-Weil sieve idea to obtain a very efficient procedure to determine  $C(\mathbb{Q})$ . Examples of Chabauty computations supported by sieving can be found in [BE, Br, PSS]. In these examples it is the Chabauty part that is the focus of the computation, and sieving has a helping role. This is in contrast to what we describe here, where sieving is at the core of the computation, and the Chabauty approach is just used to supply us with a ‘separating’ number  $N$  such that  $C(\mathbb{Q})$  injects into  $J(\mathbb{Q})/NJ(\mathbb{Q})$ .

Chabauty’s method is applicable when the rank of  $J(\mathbb{Q})$  is less than the genus  $g$  of  $C$ . In this case, for every prime  $p$ , there is a regular nonzero differential  $\omega_p \in \Omega(C_{\mathbb{Q}_p})$  that annihilates the Mordell-Weil group under the natural pairing  $J(\mathbb{Q}_p) \times \Omega(C_{\mathbb{Q}_p}) \rightarrow \mathbb{Q}_p$ . If  $p$  is a prime of good reduction for  $C$ , then a suitable multiple of  $\omega_p$  reduces mod  $p$  to a nonzero regular differential  $\bar{\omega}_p \in \Omega(C_{\mathbb{F}_p})$ . If  $P \in C(\mathbb{F}_p)$  is a point such that  $\bar{\omega}_p$  does not vanish at  $P$  (and  $p \geq 3$ ), then there is at most one rational point on  $C$  that reduces mod  $p$  to  $P$ . See for example [St5, §6].

On the other hand, if  $N$  is divisible by the exponent of  $J(\mathbb{F}_p)$ , then the rational points on  $C$  mapping via  $\iota$  into a given coset of  $NJ(\mathbb{Q})$  in  $J(\mathbb{Q})$  will all reduce mod  $p$  to the same point in  $C(\mathbb{F}_p)$ . So if  $\bar{\omega}_p$  does not vanish at any point in  $C(\mathbb{F}_p)$ , then we know that each coset of  $NJ(\mathbb{Q})$  can contain the image under  $\iota$  of at most one point in  $C(\mathbb{Q})$ . If there is no such point and we assume the Main Conjecture of [St6], then we will be able to show using the Mordell-Weil sieve that no point of  $C(\mathbb{Q})$  maps to this coset. If there is a point, we will eventually find it.



This leads to the following outline of the procedure.

1. Find a prime  $p \geq 3$  of good reduction for  $C$  such that there is  $\omega_p \in \Omega(C_{\mathbb{Q}_p})$  annihilating  $J(\mathbb{Q})$  and such that  $\bar{\omega}_p$  does not vanish on  $C(\mathbb{F}_p)$ .
2. Find a suitable set  $S$  of primes and a number  $N$  as described in Sections 3.1 and 3.2 above, with the additional condition that the exponent of  $J(\mathbb{F}_p)$  divides  $N$ .
3. Compute  $A(S, N)$  as described in Section 3.3 above.
4. For each element  $a \in A(S, N)$ , verify that it comes from a rational point on  $C$ . To do this, we take the point of smallest canonical height in the coset of  $NJ(\mathbb{Q})$  given by  $a$  and check if it comes from a rational point on  $C$ . If it does, we record the point.
5. If the previous step is unsuccessful, we enlarge  $S$  and/or increase  $N$  and compute a new  $A(S, N)$  based on the unresolved members of the old  $A(S, N)$ . We then continue with Step 4.

We have implemented this procedure in **MAGMA** and used it on a large number of genus 2 curves with Jacobian of Mordell-Weil rank 1. It proved to be quite efficient: the computation usually takes less than two seconds and almost always less than five seconds. For this implementation, we assume that one rational point is already known and use it as a base-point for the embedding  $\iota$ . In practice, this is no essential restriction, as there seems to be a strong tendency for small points (which can be found easily) to exist on  $C$  if there are rational points at all. Of course, we also need to know a generator of the free part of  $J(\mathbb{Q})$ , or at least a point of infinite order in  $J(\mathbb{Q})$ . If we only have a point  $P$  of infinite order, we also have to check that the index of  $\mathbb{Z} \cdot P + J(\mathbb{Q})_{\text{tors}}$  in  $J(\mathbb{Q})$  is prime to  $N$ . If  $P$  is not a generator, then in Step 4, we could have the problem that the point we are looking for is not in the subgroup generated by  $P$  (mod torsion). In this case, the smallest representative of  $a$  is likely to look large, and we should first try to see if some multiple of  $a$  is small, so that it can be recognized. A version of this procedure is used by the **Chabauty** function provided by recent releases of **MAGMA**.

As mentioned in the discussion above, Steps 4 and 5 will eventually be successful if the Main Conjecture of [St6] holds for  $C$ . There is, however, an additional assumption we have to make, and that is that Step 1 will always be successful. We state this as a conjecture.

**Conjecture 4.2.** *Let  $C/\mathbb{Q}$  be a curve of genus  $g \geq 2$  such that its Jacobian is simple over  $\mathbb{Q}$  and such that the Mordell-Weil rank  $r$  is less than  $g$ . Then there are infinitely many primes  $p$  such that there exists a regular differential  $\omega_p \in \Omega(C_{\mathbb{Q}_p})$  annihilating  $J(\mathbb{Q})$  such that the reduction mod  $p$  of (a suitable multiple of)  $\omega_p$  does not vanish on  $C(\mathbb{F}_p)$ .*

Of course, this can easily be generalized to number fields in place of  $\mathbb{Q}$ .

We need to assume that the Jacobian is simple, since otherwise there can be a differential killing the Mordell-Weil group that comes from one of the simple factors. Such a differential can possibly vanish at a rational point on the curve, and then its reductions mod  $p$  will vanish at an  $\mathbb{F}_p$ -point for all  $p$ . For example, when  $C$  is a curve of genus 2 that covers two elliptic curves, one of rank zero and one of rank 1, then the (essentially unique) differential killing the Mordell-Weil group will be the pull-back of the regular differential on one of the elliptic curves, hence will be a global object. Of course, in such a case, we can instead work with one of the simple factors that still satisfies the ‘Chabauty condition’ that its Mordell-Weil rank is less than its dimension.

We give a heuristic argument that indicates that Conjecture 4.2 is plausible. We first prove a lemma.

**Lemma 4.3.** *Let  $C$  be a smooth projective curve of genus  $g \geq 2$  over  $\mathbb{F}_p$ . The probability that a random nonzero regular differential  $\bar{\omega}$  on  $C$  does not vanish on  $C(\mathbb{F}_p)$  is at least  $\frac{1}{3} + O(gp^{-1/2})$ .*

*Proof.* First assume that  $C$  is not hyperelliptic. Then we can consider the canonical embedding  $C \rightarrow \mathbb{P}^{g-1}$ . We then have to estimate the number  $n$  of hyperplane sections that do not meet the image of  $C(\mathbb{F}_p)$ . By the inclusion-exclusion principle, we have

$$\begin{aligned} n \geq & \#\mathbb{P}^{g-1}(\mathbb{F}_p) - \#C(\mathbb{F}_p)\#\mathbb{P}^{g-2}(\mathbb{F}_p) + \frac{\#C(\mathbb{F}_p)(\#C(\mathbb{F}_p) + 1)}{2} \#\mathbb{P}^{g-3}(\mathbb{F}_p) \\ & - \frac{\#C(\mathbb{F}_p)(\#C(\mathbb{F}_p) + 1)(\#C(\mathbb{F}_p) + 2)}{6} \#\mathbb{P}^{g-4}(\mathbb{F}_p). \end{aligned}$$

Since  $\#C(\mathbb{F}_p) = p + O(g\sqrt{p})$ , we find that

$$\frac{n}{\#\mathbb{P}^{g-1}(\mathbb{F}_p)} \geq 1 - 1 + \frac{1}{2} - \frac{1}{6} + O(gp^{-1/2}) = \frac{1}{3} + O(gp^{-1/2}).$$

For  $g = 3$ , the argument needs to be modified, since three points on  $C$  do not necessarily determine a line section. However, this only improves the estimate. If  $C$  is hyperelliptic, the problem is equivalent to the question, how likely is it for a random homogeneous polynomial of degree  $g - 1$  in two variables not to vanish on the image  $X$  of  $C(\mathbb{F}_p)$  in  $\mathbb{P}^1(\mathbb{F}_p)$  under the hyperelliptic quotient map  $C \rightarrow \mathbb{P}^1$ ? The number  $n$  in this case can be estimated by

$$n \geq \#\mathbb{P}^{g-1}(\mathbb{F}_p) - \#X\#\mathbb{P}^{g-2}(\mathbb{F}_p)$$

Since the size of  $X$  is  $p/2 + O(g\sqrt{p})$ , we obtain here even

$$\frac{n}{\#\mathbb{P}^{g-1}(\mathbb{F}_p)} \geq 1 - \frac{1}{2} + O(gp^{-1/2}) = \frac{1}{2} + O(gp^{-1/2}).$$

□

For  $g \rightarrow \infty$ , a similar argument shows that the probabilities are

$$e^{-1} + O\left(\frac{1}{(g-2)!}\right) + O(gp^{-1/2})$$

in the non-hyperelliptic case and

$$e^{-1/2} + O\left(\frac{1}{(g-2)!}\right) + O(gp^{-1/2})$$

in the hyperelliptic case.

We now consider a curve  $C/\mathbb{Q}$  as in Conjecture 4.2. It seems reasonable to assume that the reduction  $\bar{\omega}_p$  of a differential  $\omega_p$  annihilating  $J(\mathbb{Q})$  behaves like a random element of  $\Omega^1(C/\mathbb{F}_p)$  as  $p$  varies. By Lemma 4.3, we would then expect even a set of primes  $p$  of positive density  $\geq 1/3$  such that  $\bar{\omega}_p$  does not vanish on  $C(\mathbb{F}_p)$ .

Note that if we modify the algorithm in such a way that it considers (arbitrarily) ‘deep’ information at  $p$ , then the requirement can be weakened to the following.

**Conjecture 4.4.** *Let  $C/\mathbb{Q}$  be a curve of genus  $g \geq 2$  such that its Jacobian is simple and has Mordell-Weil rank  $r < g$ . Then there is a prime  $p \geq 3$  such that there exists a regular differential  $\omega_p \in \Omega(C_{\mathbb{Q}_p})$  annihilating  $J(\mathbb{Q})$  such that  $\omega_p$  does not vanish on  $C(\mathbb{Q})$ .*

Heuristically, the probability that  $\omega_p$  does vanish at a rational point should be zero (except when there is a good reason for it, see above), which lets us hope that the weaker conjecture may be amenable to proof. In fact, Tzanko Matev (a PhD student of Michael Stoll) has recently established a  $p$ -adic version of the ‘analytic subgroup theorem’ for abelian varieties (see [BW] for the background). It states that when  $J$  is absolutely simple, then the  $p$ -adic logarithm of an algebraic point on  $J$  cannot be contained in a proper subspace of the tangent space  $T_0 J(\mathbb{Q}_p)$  that is generated by algebraic vectors. This implies that the statement of Conjecture 4.4 is true for every  $p$  when the Mordell-Weil rank is 1, see [Ma].

## 5. INFORMATION AT BAD PRIMES

This and the following section discuss how to extract the information that the Mordell-Weil sieve needs as input in the specific case that  $C$  is a curve of genus 2 over  $\mathbb{Q}$  (or a more general number field) and we are not just interested in  $C(\mathbb{F}_p)$  and  $J(\mathbb{F}_p)$  for a prime  $p$  of good reduction.

In particular when the rank is large, which in practice means  $r \geq 3$ , it becomes important to use sufficient ‘local’ information to keep the sizes of the sets  $A(S, N_j)$  reasonably small. A valuable source of such information is given by primes of bad reduction, as the group orders of suitable quotients of  $J(\mathbb{Q}_p)$  tend to be rather

smooth. More precisely, we would like to make use of the top layers of the filtration given by the well-known exact sequences

$$0 \longrightarrow J^0(\mathbb{Q}_p) \longrightarrow J(\mathbb{Q}_p) \longrightarrow \Phi_p(\mathbb{F}_p) \longrightarrow 0$$

and

$$0 \longrightarrow J^1(\mathbb{Q}_p) \longrightarrow J^0(\mathbb{Q}_p) \longrightarrow \tilde{J}(\mathbb{F}_p) \longrightarrow 0.$$

Here  $\Phi_p$  is the component group of the special fiber of the Néron model of  $J$  over  $\mathbb{Z}_p$  and  $\tilde{J}$  is the connected component of the special fiber (and  $J^1(\mathbb{Q}_p)$  is the kernel of reduction).

In this section, we describe how this information can be obtained when  $C$  is a genus 2 curve,  $p$  is odd, and the given model of  $C$  is regular at  $p$ . Here and in the following, we will use  $J^1(\mathbb{Q}_p)$ , and later  $J^n(\mathbb{Q}_p)$ , to denote the kernel of reduction and the ‘higher’ kernels of reduction *with respect to the given model of the curve*. If the model is not minimal in a suitable sense, then our kernel of reduction will be strictly contained in the kernel of reduction with respect to a Néron model. To be precise, for us,  $J^1(\mathbb{Q}_p)$  denotes the subgroup of points in  $J(\mathbb{Q}_p)$  whose reduction mod  $p$  on the projective model in  $\mathbb{P}^{15}$  given as described in [CF, Ch. 2] is the origin; see below.

But first, we will establish some general facts. Let  $k$  be a field with  $\text{char}(k) \neq 2$ , and let

$$F(X, Z) = f_6X^6 + f_5X^5Z + f_4X^4Z^2 + f_3X^3Z^3 + f_2X^2Z^4 + f_1XZ^5 + f_0Z^6$$

be a homogeneous polynomial of degree 6 with coefficients in  $k$ . We do not assume that  $F$  is squarefree or even that  $F \neq 0$ .

**Definition 5.1.**

- (1) Let  $C_F$  be the curve given by the equation

$$Y^2 = F(X, Z)$$

in the weighted projective plane with weights  $(1, 3, 1)$  for the coordinates  $X, Y, Z$ , respectively.

- (2) Denote by  $J_F$  the scheme in  $\mathbb{P}_k^{15}$  that is defined by the 72 quadrics described in [CF, Ch. 2] (see [F13, jacobian.variety/defining.equations] for explicit equations).
- (3) Let  $K_F$  be the surface in  $\mathbb{P}_k^3$  that is defined by the Kummer surface equation as given in [CF, Ch. 3], and denote by  $\delta_F = \delta = (\delta_1, \dots, \delta_4)$  the polynomials giving the duplication map on the Kummer surface, see [F13, kummer/duplication].

If  $\delta(P) \neq 0$ , then we write  $\mathbb{P}\delta(P) \in \mathbb{P}^3$  for the point with projective coordinates  $(\delta_1(P) : \dots : \delta_4(P))$ .

- (4) Let  $\tilde{D}_F \subset \mathbb{A}_k^3 \times \mathbb{A}_k^4 \times \mathbb{A}_k^5$  be the scheme of triples  $(A, B, C)$  such that  $A \neq 0$  and

$$F(X, Z) = A(X, Z)C(X, Z) + B(X, Z)^2,$$

where we set for  $A = (a_0, a_1, a_2)$ ,  $B = (b_0, \dots, b_3)$  and  $C = (c_0, \dots, c_4)$

$$A(X, Z) = a_2X^2 + a_1XZ + a_0Z^2,$$

$$B(X, Z) = b_3X^3 + b_2X^2Z + b_1XZ^2 + b_0Z^3,$$

$$C(X, Z) = c_4X^4 + c_3X^3Z + c_2X^2Z^2 + c_1XZ^3 + c_0Z^4.$$

Let  $D_F \subset \mathbb{P}_k^2 \times \mathbb{A}_k^4$  be the image of  $\tilde{D}_F$  under the projection to the first two factors, followed by the canonical map  $\mathbb{A}^3 \setminus \{0\} \rightarrow \mathbb{P}^2$ .

When  $F$  is squarefree, then  $C_F$  is a smooth curve of genus 2,  $J_F$  is its Jacobian, and  $K_F$  is the associated Kummer surface. The scheme  $D_F$  then gives the possible Mumford representations of effective divisors of degree 2 on  $C_F$ ; it therefore maps onto  $J_F \setminus \{O\}$ . We will extend these relations to our more general setting.

The ‘origin’  $O = (1 : 0 : \dots : 0)$  is always a (smooth) point on  $J_F$ . The 16 coordinates on  $J_F$  split into 10 ‘even’ and 6 ‘odd’ ones; the even coordinates are given (up to a simple invertible linear transformation) by the monomials of degree 2 in the coordinates on  $K_F$ .

Let us first look at the relation between  $J_F$  and  $K_F$ .

**Lemma 5.2.** *Projection to the ten even coordinates gives rise to a morphism  $\kappa : J_F \rightarrow K_F$ , which is a double cover.*

*Proof.* The monomials of degree 2 in the odd coordinates can be expressed as quadratic forms in the even coordinates. So if all the even coordinates vanish, the odd coordinates have to vanish, too. Therefore projection to the  $\mathbb{P}^9$  spanned by the even coordinates is a morphism. The relations between the even coordinates are exactly those coming from the fact that the even coordinates come from the monomials of degree 2 in the coordinates of the  $\mathbb{P}^3$  containing  $K_F$ , together with the quadratic relation coming from the quartic equation defining  $K_F$ . Therefore the image of  $J_F$  in  $\mathbb{P}^9$  is the image of  $K_F$  under the 2-uple embedding of  $\mathbb{P}^3$  into  $\mathbb{P}^9$  and therefore isomorphic to  $K_F$ . This gives the morphism  $\kappa$ . The fact stated in the first sentence of this proof then implies that  $\kappa$  is a (ramified) double cover.  $\square$

Now let us consider the relation between  $\tilde{D}_F$ ,  $D_F$  and  $J_F$ .

**Lemma 5.3.** *There is a morphism*

$$\phi : D_F \rightarrow J_F \setminus \{O\}$$

*that specializes to the representation of points on  $J_F$  mentioned above when  $F$  is squarefree. The morphism  $\phi$  is surjective on  $k$ -points and makes the following*

diagram commute:

$$\begin{array}{ccc}
 D_F & \xrightarrow{\phi} & J_F \setminus \{O\} \\
 & \searrow & \downarrow \kappa \\
 & & K_F \setminus \{\kappa(O)\} \\
 & \searrow \text{pr}_1 & \downarrow \text{pr}' \\
 & & \mathbb{P}^2
 \end{array}
 \quad
 \begin{array}{ccc}
 \text{pr}' : & K_F & \longrightarrow \mathbb{P}^2 \\
 & (x_1 : x_2 : x_3 : x_4) & \longmapsto (x_3 : -x_2 : x_1) \\
 \text{pr}_1 : & \mathbb{P}^2 \times \mathbb{A}^3 & \longrightarrow \mathbb{P}^2 \\
 & ((a_0 : a_1 : a_2), B) & \longmapsto (a_0 : a_1 : a_2)
 \end{array}$$

Furthermore,  $\phi(A, B) = \phi(A', B')$  if and only if  $A = A'$  and  $B(X, Z) \equiv B'(X, Z) \pmod{A(X, Z)}$ .

*Proof.* Let  $(A, B) \in D_F$ . Then  $\phi$  can be given as

$$\begin{aligned}
 \phi(A, B) = & (* : * : * : * : * : * : * \\
 & : -b_2a_0^2 + b_1a_0a_1 - b_0(a_1^2 - a_0a_2) : b_3a_0^2 - b_1a_0a_2 + b_0a_1a_2 \\
 & : -b_3a_0a_1 + b_2a_0a_2 - b_0a_2^2 : b_3(a_1^2 - a_0a_2) - b_2a_1a_2 + b_1a_2^2 \\
 & : a_0^2 : -a_0a_1 : a_0a_2 : -a_1a_2 : a_2^2 : a_1^2 - 4a_0a_2) .
 \end{aligned}$$

One can check using the defining equations of  $J_F$  given at [F13] that the first six coordinates are uniquely determined by the last ten when the last six are not all zero. It is also possible to write down expressions for the first six coordinates in terms of  $A, B$  and  $C$ , where  $(A, B, C)$  is the point on  $\tilde{D}_F$  mapping to  $(A, B)$ . The image of the point above under  $\kappa$  has the form  $(a_2 : -a_1 : a_0 : *)$ , which shows that  $\text{pr}' \circ \kappa \circ \phi = \text{pr}_1$ . It remains to show that  $\phi$  is surjective on  $k$ -points. Let  $P \in J_F(k) \setminus \{O\}$ , then  $A = \text{pr}'(\kappa(P)) \in \mathbb{P}^2(k)$  is defined. Consider the middle four coordinates on  $J$  (n<sup>os</sup> 7 through 10). The expression for  $\phi(A, B)$  given above gives rise to a system of linear equations for  $B$ . The last six of the equations defining  $J_F$  ensure that the system has a solution  $B \in \mathbb{A}^4(k)$ . Then  $\phi(A, B)$  agrees with  $P$  in the last ten coordinates; therefore we must have  $\phi(A, B) = P$ .

To show the last statement, note first that  $\phi(A, B) = \phi(A', B')$  implies  $A = A'$  (apply  $\text{pr}' \circ \kappa$ ). The kernel of the matrix giving the linear equations determining  $B$  is spanned by the coefficient tuples of  $ZA(X, Z)$  and  $XA(X, Z)$ . This shows that  $\phi(A, B) = \phi(A, B') \iff A(X, Z) \mid B(X, Z) - B'(X, Z)$ .  $\square$

By the above, the fibers of the map  $\phi : D_F \rightarrow J_F \setminus \{O\}$  are isomorphic to  $\mathbb{A}^2$ . We can remove this ambiguity at the cost of restricting to a subscheme.

**Lemma 5.4.** *Let*

$$\begin{aligned} U_0 &= \{(A, B) \in D_F : a_0 = 1, b_0 = b_1 = 0\}, \\ U_1 &= \{(A, B) \in D_F : a_1 = 1, a_0 a_2 \neq 1, b_1 = b_2 = 0\}, \\ U_2 &= \{(A, B) \in D_F : a_2 = 1, b_2 = b_3 = 0\}. \end{aligned}$$

*Then  $\phi|_{U_j}$  is an isomorphism onto its image for each  $j \in \{0, 1, 2\}$ , and*

$$\phi(U_0) \cup \phi(U_1) \cup \phi(U_2) = J_F \setminus \{O\}.$$

*Proof.* In each case, the linear system giving  $b_0, \dots, b_3$  in terms of the middle four coordinates on  $J_F$ , together with the conditions  $b_j = b_{j+1} = 0$  has a unique solution, giving the inverse morphism  $\phi(U_j) \rightarrow U_j$ . The last statement then follows, since the images of the  $U_j$  in  $\mathbb{P}^2$  cover  $\mathbb{P}^2$ .  $\square$

Now we can describe the smooth locus of  $J_F$ .

**Proposition 5.5.** *The origin  $O$  is always a smooth point on  $J_F$ . If  $P \in J_F \setminus \{O\}$ , write  $P = \phi(A, B)$  with  $(A, B) \in D_F$ . Then  $P$  is a singular point on  $J_F$  if and only if*

- (1)  $A(X, Z)$  has a simple root (in  $\mathbb{P}^1$ ) at a multiple root of  $F$ , or
- (2)  $A(X, Z) = cL(X, Z)^2$  has a double root at a multiple root of  $F$  and  $L(X, Z)^3$  divides  $F(X, Z) - B(X, Z)^2$ .

Note that the last condition means that the curve  $Y = B(X, Z)$  is tangential to a branch of  $C_F$  at the singular point  $L(X, Z) = Y = 0$ .

*Proof.* The statement that  $O \in J_F$  is smooth is easily checked using the explicit equations. The general statement is geometric, so we can assume  $k$  to be algebraically closed. Then there is a transformation  $\sigma \in \mathrm{GL}_2(k)$  such that  $A^\sigma(X, Z) = XZ$  or  $X^2$ . In the first case, we can take  $Q \in U_1$ , and we easily check that  $Q$  is singular on  $U_1$  if and only if  $f_0 = f_1 = 0$  or  $f_6 = f_5 = 0$ , which means that  $F$  has a multiple root at one of the two simple roots of  $A(X, Z)$ , namely  $0$  or  $\infty$ . In the second case, we can take  $Q \in U_2$ , and we find that  $Q$  is singular on  $U_2$  if and only if  $f_0 = f_1 = f_2 - b_1^2 = 0$ , which means that  $F$  has a multiple root at the double root  $0$  of  $A(X, Z)$  and that  $X^3 = L(X, Z)^3$  divides  $F(X, Z) - B(X, Z)^2$ . Since  $\phi$  is an isomorphism on  $U_j$ ,  $P$  is singular on  $J_F$  if and only if  $Q$  is singular on  $U_j$ .  $\square$

**Definition 5.6.** We denote by  $D'_F$  the locus of points  $Q \in D_F$  such that  $\phi(Q)$  is a smooth point on  $J_F$ , and we write  $J'_F$  for the subscheme of smooth points on  $J_F$ .

According to Prop. 5.5 above, the complement of  $D'_F$  in  $D_F$  consists of the points  $(A, B)$  satisfying one of the conditions in the proposition.

**Lemma 5.7.** *Assume that  $k$  is algebraically closed. Then  $J_F$  is reduced and irreducible except in the following two cases.*

- (1)  $F = 0$ . Then  $J_F$  has two irreducible components. One is  $\phi(\mathbb{P}^2 \times \{0\})$  and is not reduced, the other contains  $O$ , and its remaining points are of the form  $\phi(A, B)$  such that there is a linear form  $L$  with  $A(X, Z) = cL(X, Z)^2$  and  $L(X, Z) \mid B(X, Z)$ .
- (2)  $F = H(X, Z)^2$  is a nonzero square. Then  $J_F$  has three irreducible components, all of which are reduced. Two of them are given by  $\phi(\mathbb{P}^2 \times \{\pm H\})$ , the third contains the origin  $O$ .

*Proof.* It is easy to check the claim in the two special cases. In all other cases,  $C_F$  is reduced and irreducible. Consider the symmetric square  $C_F^{(2)}$ . Let  $S \subset C_F$  be the (finite) set of singular points (given by the multiple roots of  $F$ ). Identify  $S$  with its image in  $C_F^{(2)}$  under the diagonal map. There is a morphism

$$\psi : C_F^{(2)} \setminus S \rightarrow J_F$$

that can be defined using the expressions for the coordinates on the Jacobian given in [CF, Ch. 2]. Its image is

$$J_F \setminus \{ \phi(A, B) : A(X, Z) = cL(X, Z)^2, L(P) = 0 \text{ for some } P \in S \},$$

which is dense in  $J_F$ . Since  $C_F^{(2)}$  is irreducible, this implies that  $J_F$  is irreducible as well. The component containing the origin is always reduced, since the origin is a smooth point.  $\square$

**Remark 5.8.** If  $k$  is not algebraically closed, then there is the additional case  $F = cH(X, Z)^2$  with  $H \neq 0$  and a non-square  $c \in k$ . According to Lemma 5.7,  $J_F$  has three geometric components. One is defined over  $k$  and contains the origin, the other two are conjugate over  $k(\sqrt{c})$  and do not have any smooth  $k$ -points.

If we apply the argument in the case  $F = H^2 \neq 0$ , then  $C_F$  has two components, therefore  $C_F^{(2)}$  has three, and we see again that  $J_F$  has three (reduced) irreducible components.

From the description given in the proof, we see that  $\psi$  extends to a morphism

$$\tilde{\psi} : \text{Bl}'_S C_F^{(2)} \longrightarrow J_F.$$

Here  $\text{Bl}'_S C_F^{(2)}$  is obtained from  $C_F^{(2)}$  by replacing each point in  $S$  by a  $\mathbb{P}^1$  in such a way that locally near a point in  $S$ ,  $\text{Bl}'_S C_F^{(2)}$  is the closure of the graph of the rational map giving the slope (in a suitable affine chart) of the line connecting the two points in the divisor corresponding to a point in  $C_F^{(2)}$ . Let  $\pi : C_F \rightarrow \mathbb{P}^1$  be the canonical map, and denote by  $\pi^*$  the induced map  $\mathbb{P}^1 \rightarrow C_F^{(2)}$ . Then  $\tilde{\psi}$  is an



isomorphism away from  $\pi^*(\mathbb{P}^1)$  and contracts  $\pi^*(\mathbb{P}^1)$  to the origin  $O \in J_F$ . We therefore have an isomorphism

$$\mathrm{Bl}'_S C_F^{(2)} \cong \mathrm{Bl}_O J_F.$$

This generalizes the standard fact that  $C_F^{(2)} \cong \mathrm{Bl}_O J_F$  if  $C_F$  is smooth.

**Definition 5.9.** We denote by  $J_F^0$  the component of the smooth part  $J'_F$  of  $J_F$  that contains the origin  $O$ . We write  $K_F^0$  for the open subscheme of  $K_F$  on which  $\delta \neq 0$ . Let  $B_F$  denote the matrix of biquadratic forms as defined in [CF, Ch. 3]; see [Fl3, kummer/biquadratic.forms] for explicit expressions.

**Proposition 5.10.** *We have  $\kappa(J_F^0) = K_F^0$ . Equivalently, a point  $P \in J_F$  is smooth and on the component of the origin if and only if  $\delta(\kappa(P)) \neq 0$ .*

*Proof.* We can again assume that  $k$  is algebraically closed and that  $\mathrm{pr}'(\kappa(P))$  is one of  $(0 : 1 : 0)$  or  $(1 : 0 : 0)$ . ( $O$  is always smooth, and  $\delta_4(\kappa(O)) \neq 0$ .) We represent  $P$  as  $\phi(Q)$  with  $Q = ((0 : 1 : 0), (b_0, 0, 0, b_3))$  or  $Q = ((1 : 0 : 0), (b_0, b_1, 0, 0))$ , respectively. Then we can use the description of singular points given in Prop. 5.5 and the description of the components of  $J_F$  given in Lemma 5.7. Writing down the polynomials  $\delta_j$  evaluated at  $\kappa(\phi(Q))$ , we conclude after some fairly straightforward manipulations that in the first case,  $\delta = 0$  if and only if  $f_0 = f_1 = 0$  or  $f_6 = f_5 = 0$ , or there are  $b_1, b_2$  such that  $F = (b_3X^3 + b_2X^2Z + b_1XZ^2 + b_0Z^3)^2$ . The first two conditions mean as before that there is a singularity at 0 or  $\infty$ , and the third says that  $P$  is not on the right component. In the second case, we find in a similar way that  $\delta = 0$  if and only if  $X^2 \mid F$  and  $X^3 \mid F - (b_1XZ^2 + b_0Z^3)^2$ , or  $F$  is a square and does not vanish at 0. The first condition means that  $P$  is not smooth, the second says again that  $P$  is not on the right component.  $\square$

Now we can state and prove the main result of this section.

**Theorem 5.11.** *The scheme  $J_F^0$  is a commutative algebraic group in a natural way. If we represent its nonzero elements by pairs  $(A, B) \in D^0(F)$ , then composition in the group can be performed by Cantor composition and reduction [Ca], except when both polynomials  $A(X, Z)$  vanish at the same singular point of  $C_F$ . Without loss of generality, this point is at  $X = 0$ ; then we have*

$$\phi(X^2, \lambda XZ^2) + \phi(X^2, \mu XZ^2) = \phi\left(X^2, \frac{f_2 + \lambda\mu}{\lambda + \mu} XZ^2\right)$$

where  $F(X, Z) = f_2X^2Z^4 + f_3X^3Z^3 + \dots + f_6Z^6$ . If  $\lambda + \mu = 0$ , the result is the zero element in  $J_F^0$ .

*Proof.* Let  $\mathcal{O}$  be a complete discrete valuation ring with uniformizer  $\pi$ , residue field  $k$  and field of fractions  $L$ . We can then find a homogeneous polynomial  $\tilde{F} \in \mathcal{O}[X, Z]$  of degree six that is squarefree and whose reduction mod  $\pi$  is  $F$ . We

denote reduction mod  $\pi$  by a bar. Let  $G = J_{\bar{F}}(L)$ ,  $G^0 = \{P \in G : \bar{P} \in J_F^0(k)\}$ , and  $G^1 = \{P \in G : \bar{P} = O \in J_F(k)\}$ . Then for  $P \in G^0$  and  $Q \in G^1$ , we have  $\overline{P+Q} = \bar{P}$ . To see this, note that the images of  $P \pm Q$  under  $\kappa$  are given by  $B_{\bar{F}}(P, Q)$ . Since  $\overline{B_{\bar{F}}(P, Q)} = B_F(\bar{P}, \bar{Q}) \sim \bar{P}^\top \bar{P}$  (abusing notation by letting  $\bar{P}$  denote a vector of projective coordinates for  $\bar{P}$ ), we must have  $\kappa(\overline{P \pm Q}) = \kappa(\bar{P})$ . This implies that  $\overline{P+Q} = \bar{P}$  or  $-\bar{P}$ . The function  $Q \mapsto \overline{P+Q}$  cannot take exactly two distinct values on the residue class of  $O$ , so we must have  $\overline{P+Q} = \bar{P}$ .

This implies that  $G^1$  is a subgroup of  $G$ , that  $G^1$  acts on  $G^0$  and that (at least as sets)  $G^0/G^1 \cong J_F^0(k)$ . By a similar argument, we see that  $G^0$  is also a subgroup of  $G$  (if  $P, Q \in G^0$ , then by Prop. 3.1 of [St3],  $B_F(\bar{P}, \bar{Q}) \neq 0$ , which implies by Lemma 3.2 of [St3] that  $\overline{P \pm Q} \in J_F^0(k)$ ). This already shows that  $J_F^0(k)$  has a group structure (and the same is true for  $J_F^0(\ell)$  for every field extension  $\ell$  of  $k$ ).

To see that the group law on  $J_F^0$  is given by Cantor's algorithm, we can lift two given elements to  $G^0$  in such a way that we stay in the same case in the algorithm, then apply the algorithm over  $L$  (in fact, over  $\mathcal{O}$ ) and reduce mod  $\pi$ . This works unless we are in the special case mentioned in the statement of the proposition. The formula in this case can be obtained by a suitable limit argument. This then also shows that  $J_F^0$  is an algebraic group.  $\square$

The upshot of this result is that *we can do computations* in the group  $J_F^0(k)$ , much in the same way as we compute in the Jacobian of  $C_F$  when  $C_F$  is smooth.

**Remark 5.12.** If  $k = \mathbb{F}_q$  and  $q$  is odd, one can work out the order of the group  $J_F^0(k)$ , depending on the factorization of  $F$ . This leads to the table in Figure 1. The subscripts give the degrees of the factors, which are assumed to be irreducible if they occur with multiplicity  $> 1$ , and to be pairwise coprime.  $E$  is the genus 1 curve  $y^2 = h_4(x, 1)$  or  $y^2 = h_3(x, 1)$ . ‘sq( $c$ )’ means that  $c$  is a square in  $\mathbb{F}_q^\times$ .

If  $F = H^2$  is a nonzero square, then by Lemma 5.7  $J_F$  splits into three components, the two components not containing  $O$  being given by  $\phi(\mathbb{P}^2 \times \{\pm H\})$ . We denote their intersection with  $J_F'$  by  $J_F^\pm$ . In a similar way as above for the group structure of  $J_F^0$ , we obtain well-defined maps

$$J_F^0 \times J_F^+ \rightarrow J_F^+, \quad J_F^0 \times J_F^- \rightarrow J_F^-, \quad \text{and} \quad J_F^+ \times J_F^- \rightarrow J_F^0$$

that are compatible with the group structure of  $J_F^0$  and show that  $J_F^+$  and  $J_F^-$  are principal homogeneous spaces under  $J_F^0$ . Therefore the number of smooth points in  $J_F(k)$  is three times the cardinality of  $J_F^0(k)$ . On the other hand, our addition is not defined on  $J_F^+ \times J_F^+$  or  $J_F^- \times J_F^-$ . (In this case, the  $B$  polynomial one obtains in Cantor's algorithm vanishes along one of the components of  $C_F$ , and we get an undefined  $A$ .)

As in the proof of Thm. 5.11, we now consider the situation that  $\mathcal{O}$  is a complete discrete valuation ring with uniformizer  $\pi$ , residue field  $k$  such that  $\text{char}(k) \neq 2$

factorization	$c$	order if $\text{sq}(c)$	order otherwise
0	—	$q^2$	
$\ell_1^2 h_4$	$\text{Res}(\ell_1, h_4)$	$(q-1) \# E(\mathbb{F}_q)$	$(q+1) \# E(\mathbb{F}_q)$
$\ell_1^3 h_3$	—	$q \# E(\mathbb{F}_q)$	
$\ell_1^2 m_1^2 h_2$	$c = \text{Res}(\ell_1, h_2)$ $c' = \text{Res}(m_1, h_2)$	$\begin{cases} (q-1)^2 & \text{if } \text{sq}(c') \\ q^2 - 1 & \text{else} \end{cases}$	$\begin{cases} q^2 - 1 & \text{if } \text{sq}(c') \\ (q+1)^2 & \text{else} \end{cases}$
$g_2^2 h_2$	$\text{Res}(g_2, h_2)$	$q^2 - 1$	$q^2 + 1$
$cg_1^2 h_1^2 \ell_1^2$	leading coeff.	$(q-1)^2$	$(q+1)^2$
$cg_1^2 h_2^2$	leading coeff.	$q^2 - 1$	$q^2 - 1$
$cg_3^2$	leading coeff.	$q^2 + q + 1$	$q^2 - q + 1$
$g_1^3 \ell_1^2 h_1$	$\text{Res}(\ell_1, g_1 h_1)$	$q(q-1)$	$q(q+1)$
$\ell_1^4 h_2$	$\text{Res}(\ell_1, h_2)$	$q(q-1)$	$q(q+1)$
$cg_1^3 h_1^3$	—	$q^2$	
$cg_2^3$	—	$q^2$	
$cg_1^2 h_1^4$	leading coeff.	$q(q-1)$	$q(q+1)$
$g_1^5 h_1$	—	$q^2$	
$cg_1^6$	leading coeff.	$q^2$	$q^2$

FIGURE 1. Group orders  $\#J_F^0(\mathbb{F}_q)$ .

and field of fractions  $L$ . We denote by  $v : L^\times \rightarrow \mathbb{Z}$  the normalized valuation. Let  $F \in \mathcal{O}[X, Z]$  be homogeneous of degree 6 and squarefree. The 72 quadrics defining  $J_F$  have coefficients in  $\mathcal{O}$ ; we obtain a flat scheme over  $\text{Spec}(\mathcal{O})$ . We abuse notation slightly and set

$$J_F^0(L) = \{P \in J_F(L) : \bar{P} \in J_F^0(k)\} \quad \text{and} \quad J_F^1(L) = \{P \in J_F(L) : \bar{P} = \bar{O}\}.$$

We will call  $J_F^1(L)$  the *kernel of reduction*. The reader should be warned that this notion depends on the given model of the curve and need not coincide with the kernel of reduction defined in terms of a Néron model of the Jacobian.

**Lemma 5.13.** *Consider  $(A, B) \in D_F(L)$  with  $A(X, Z) = X^2 + a_1 XZ + a_0 Z^2$  and  $B(X, Z) = b_1 XZ^2 + b_0 Z^3$ .*

- (1) *If  $a_0, a_1 \in \mathcal{O}$ , but  $b_0$  and  $b_1$  are not both integral, then  $P = \phi(A, B)$  is in the kernel of reduction.*
- (2) *Now assume that  $a_0, a_1, b_0$  and  $b_1$  are integral. If  $\pi$  divides  $f_0, f_1$  and  $a_0$ , but  $\pi^2$  does not divide  $f_0$ , then  $\pi$  also divides  $a_1$  and  $b_0$ , but does not divide  $f_2 - b_1^2$ .*

*Proof.*

- (1) We work in the affine chart  $(X : Z) = (x : 1)$ . Reducing  $F(x, 1)$  modulo  $A(x, 1) = x^2 + a_1x + a_0$ , we obtain a relation  $y^2 = \alpha_1x + \alpha_0$  that holds for the points in the divisor described by the pair of polynomials  $(A, B)$ . Since the coefficients of  $F$  and  $a_0, a_1$  are integral, the same holds for  $\alpha_0$  and  $\alpha_1$ . If we square the relation  $y = B(x, 1)$  and reduce it mod  $A(x, 1)$ , we obtain

$$b_1(2b_0 - b_1a_1) = \alpha_1, \quad b_0^2 - b_1^2a_0 = \alpha_0.$$

The second relation shows that  $v(b_0) < v(b_1)$  is impossible, so we must have  $v(b_1) < 0$ . Eliminating  $b_0$  from the two equations above gives  $(a_1^2 - 4a_0)b_1^2 \in \mathcal{O}$ , so the discriminant of  $A(x, 1)$  must be divisible by  $\pi^2$ . Therefore the two points in the divisor reduce mod  $\pi$  to points with the same  $x$ -coordinate. If these points were not opposite, then  $y = B(x, 1)$  would reduce to the equation of the (non-vertical) tangent line at the point on  $C_F(k)$  that both points reduce to, so  $b_0$  and  $b_1$  would be integral, contradicting the assumptions. So the divisor reduces to the sum of two opposite points, hence  $P$  reduces mod  $\pi$  to the origin.

- (2) We know that  $x^2 + a_1x + a_0$  divides  $F(x, 1) - (b_1x + b_0)^2$ . Write  $f_0 = \pi f'_0$ ,  $f_1 = \pi f'_1$ ,  $a_0 = \pi a'_0$ . From

$$\begin{aligned} f_6x^6 + \cdots + f_2x^2 + \pi f'_1x + \pi f'_0 - (b_1x + b_0)^2 \\ = (x^2 + a_1x + \pi a'_0)(c_4x^4 + c_3x^3 + c_2x^2 + c_1x + c_0), \end{aligned}$$

we get

$$\begin{aligned} \pi f'_0 - b_0^2 &= \pi a'_0 c_0 \\ \pi f'_1 - 2b_0b_1 &= a_1c_0 + \pi a'_0 c_1 \\ f_2 - b_1^2 &= c_0 + a_1c_1 + \pi a'_0 c_2 \end{aligned}$$

The first of these implies that  $b_0 = \pi b'_0$  for some  $b'_0 \in \mathcal{O}$ . Since  $f'_0$  is not divisible by  $\pi$  (by assumption), we then also see that  $\pi \nmid a'_0 c_0$ . The second equation then shows that  $\pi$  divides  $a_1$ , and then the third equation tells us that  $f_2 - b_1^2 \equiv c_0 \not\equiv 0 \pmod{\pi}$ .

□

This allows us to get a description of the reductions of points not in the kernel of reduction when the curve is regular.

**Corollary 5.14.** *Assume that  $C_F/\mathcal{O}$  as above is regular. Let  $P \in J_F(L) \setminus J_F^1(L)$ . If  $P = \phi(A, B)$  with  $A(X, Z) \in \mathcal{O}[X, Z]$  primitive, then after adding a suitable multiple of  $A(X, Z)$ ,  $B(X, Z)$  has coefficients in  $\mathcal{O}$ , and the reduction  $(\bar{A}, \bar{B})$  of  $(A, B) \pmod{\pi}$  is in  $D'_F(k)$ , hence  $\bar{P}$  is a smooth point on  $J_{\bar{F}}$ . In particular, if  $\bar{F}$  is not a square, then  $J_F(L) = J_{\bar{F}}^0(L)$ .*

*Proof.* First assume that the coefficient of  $X^2$  in  $A(X, Z)$  is a unit. Then we can take  $A(x, 1)$  to be monic and  $B(x, 1)$  to be of degree at most 1. The integrality of  $B$  is given by Lemma 5.13, (1). If  $\bar{A}$  vanishes at a singularity of  $C_{\bar{F}}$ , then by a suitable shift, we can assume that the singularity is at  $x = 0$  (we may have to extend the field for that; note that the shift will be by an integral element). We then have that  $\pi$  divides  $f_0, f_1$  and  $a_0$ , which by Lemma 5.13, (2), implies that  $\pi$  also divides  $a_1$  and  $b_0$  ( $\pi^2 \nmid f_0$  because of the regularity assumption). This shows that  $\bar{A}$  has a double root at the singularity (and hence, that no field extension was necessary) and that  $\bar{B} = \lambda X Z^2$ . We also know from the lemma that  $\lambda^2 \neq \bar{f}_2$ , which means exactly that the slope of the line described by  $\bar{b}$  does not coincide with the slope of a branch of the curve at the singularity. Hence  $(\bar{A}, \bar{B}) \in D'_{\bar{F}}(k)$ . This implies that  $\bar{P} \in J'_{\bar{F}}$ . If  $\bar{F}$  is not a square, then  $J'_{\bar{F}}(k) = J^0_{\bar{F}}(k)$ , and the last claim follows.

The case when the coefficient of  $X^2$  in  $A(X, Z)$  is not a unit can be reduced to the general case discussed above by a suitable change of coordinates.  $\square$

**Corollary 5.15.** *Assume that  $C_F/\mathcal{O}$  is regular and that  $\bar{F}$  is not a square. Then the following sequence is exact.*

$$0 \longrightarrow J^1_F(L) \longrightarrow J_F(L) \xrightarrow{P \mapsto \bar{P}} J^0_{\bar{F}}(k) \longrightarrow 0.$$

*Proof.* By Cor. 5.14, we know that  $J^0_F(L) = J_F(L)$ , and by the proof of Thm. 5.11, we know that reduction mod  $\pi$  gives a group homomorphism  $J^0_F(L) \rightarrow J^0_{\bar{F}}(k)$  with kernel  $J^1_F(L)$ . This homomorphism is surjective because of Hensel's Lemma (recall that the points in  $J^0_{\bar{F}}(k)$  are smooth).  $\square$

**Remark 5.16.** When  $C_F/\mathcal{O}$  is regular, then the scheme obtained from  $J_F/\mathcal{O}$  by removing the singular points in the special fiber  $J_{\bar{F}}/k$  is the Néron model of  $J_F/L$ , and  $J^0_{\bar{F}}/k$  is the connected component of the identity on the special fiber.

If  $C_F/\mathcal{O}$  is not regular, then the smooth part of  $J_F/\mathcal{O}$  still maps to the Néron model (by the universal property of the latter), but the image of  $J^0_{\bar{F}}$  in the special fiber of the Néron model can be trivial or a one-dimensional subgroup.

We now consider a genus 2 curve  $C = C_F$  over  $\mathbb{Q}_p$  given by a Weierstrass equation  $Y^2 = F(X, Z)$  over  $\mathbb{Z}_p$ . We will drop the subscript  $F$  in the following. By the above, we have  $J^0(\mathbb{Q}_p)/J^1(\mathbb{Q}_p) \cong J^0_{\bar{F}}(\mathbb{F}_p)$ , and the map is given by reducing the standard representation modulo  $p$  (on elements that are not in the kernel of reduction).

This gives us a handle on the quotient  $J(\mathbb{Q}_p)/J^1(\mathbb{Q}_p)$  when  $p$  is odd, the model is regular and the special fiber of  $C$  has just one component, cf. Cor. 5.15.

Since we have now established that we can use Cantor reduction on  $J_{\overline{F}}^0(\mathbb{F}_p)$  in the same way as in the good reduction case, we can proceed and find the image  $\iota(C(\mathbb{F}_p)) \subset J_{\overline{F}}^0(\mathbb{F}_p)$  in the same way as described in Section 3.1.

Otherwise, that is, when  $p = 2$ , the model is not regular, or the special fiber has several components, we first need to find  $J^0(\mathbb{Q}_p)$ , or rather (for our purposes)  $J(\mathbb{Q}) \cap J^0(\mathbb{Q}_p)$ . We can do this by an enumerative process.

In the following,  $A$  is a finitely generated free abelian group,  $t$  is a test that determines whether a given element of  $A$  is in the subgroup. In our application,  $A = J(\mathbb{Q})$ , and  $t$  tests whether a point  $P$  is in  $J^0(\mathbb{Q}_p)$ . According to Prop. 5.10, we can use

$$t(P) \iff v_p(\delta(\kappa(P))) = 4v_p(\kappa(P))$$

(with the same choice of projective coordinates for  $\kappa(P)$  on both sides), or in the notation of [St3],  $t(P) \iff \epsilon_p(P) = 0$ .

GetSubgroup( $A, t$ ):

```

 $g := \emptyset$  //  $g$  will contain the generators of the subgroup
 $A' := \{0\} \subset A$  // known part of quotient group
for  $b \in \text{Generators}(A)$ :
  // find smallest multiple of  $b$  such that  $A' + b$  meets the subgroup
   $j := 1$ ;  $b' := b$ 
  while  $\neg \exists a \in A' : t(b' + a)$ :
     $j := j + 1$ ;  $b' := b' + b$ 
  end while
  // note new subgroup generator
   $g := g \cup \{b' + a\}$ , where  $a \in A'$  satisfies  $t(b' + a)$ 
  // extend  $A'$  to get a set of representatives of the image of the group
  // generated by the first few generators of  $A$  in the quotient
   $A' := \{a + i \cdot b : i \in \{0, \dots, j - 1\}, a \in A'\}$ 
end for
return  $\langle g \rangle$  // a subgroup of  $A$ 

```

This allows us to find  $J(\mathbb{Q}) \cap J^0(\mathbb{Q}_p)$  and hence the image of  $J(\mathbb{Q})$  in  $J(\mathbb{Q}_p)/J^0(\mathbb{Q}_p)$ . It remains to determine the image of  $C(\mathbb{Q}_p)$  in this group. It is, however, better to find the image of  $C(\mathbb{Q}_p)$  in  $J(\mathbb{Q}_p)/J^1(\mathbb{Q}_p)$  directly, or rather, to find the subset of  $J(\mathbb{Q})/(J(\mathbb{Q}) \cap J^1(\mathbb{Q}_p))$  that is in the image of  $C(\mathbb{Q}_p)$ . For this we use the map to the dual Kummer surface described below in Section 6: for a representative  $P \in J(\mathbb{Q})$  of each element of  $J(\mathbb{Q})/(J(\mathbb{Q}) \cap J^1(\mathbb{Q}_p))$ , we check if its image on the dual Kummer surface satisfies  $p^2 \mid \eta_4$  and  $p \mid \eta_1\eta_3 - \eta_2^2$ .

The reason for working mod  $J^1(\mathbb{Q}_p)$  and not mod  $J^0(\mathbb{Q}_p)$  (which might be more efficient) is that there does not seem to be a simple criterion that tells us whether we are in  $\iota(C(\mathbb{Q}_p)) + J^0(\mathbb{Q}_p)$ .

## 6. ‘DEEP’ INFORMATION

In this section, we work with genus 2 curves over  $\mathbb{Q}$  for simplicity. Everything can easily be generalized to genus 2 curves over arbitrary number fields.

Especially for small primes  $p$ , we can hope to gain valuable information by not just looking at  $J(\mathbb{F}_p)$  or, more generally,  $J(\mathbb{Q}_p)/J^1(\mathbb{Q}_p)$ , but also into the kernel of reduction to some depth. If  $J^n(\mathbb{Q}_p)$  (for  $n \geq 1$ ) denotes the ‘ $n$ th kernel of reduction’, i.e., the subgroup of elements that consists of the  $p^n\mathbb{Z}_p$ -points of the formal group, then we would like to determine (the image of  $J(\mathbb{Q})$  in)  $J(\mathbb{Q}_p)/J^n(\mathbb{Q}_p)$  and the image of  $C(\mathbb{Q}_p)$  in this group.

The first step is to find  $J(\mathbb{Q}) \cap J^n(\mathbb{Q}_p)$ . This can be done with the help of the  $p$ -adic logarithm on the Jacobian. The power series of the formal logarithm up to terms of degree 7 can be found on Victor Flynn’s website [F13, local/log]. If higher precision is needed, we perform a  $p$ -adic numerical integration, as follows. We can represent a given point in the kernel of reduction in the form  $[P_1 - P_2]$ , where  $P_1$  and  $P_2$  are points on the curve that reduce mod  $p$  to the same point. Assuming for simplicity that the points have  $p$ -adically integral coordinates and do not reduce to a Weierstrass point, we write  $P_1 = (\xi + \delta, \eta_1)$ ,  $P_2 = (\xi - \delta, \eta_2)$ . We then write the differentials  $\omega_0 = dx/2y$  and  $\omega_1 = x dx/2y$  as a power series in terms of the uniformizer  $t = x - \xi$ , times  $dt$ , and integrate this numerically from  $t = -\delta$  up to  $t = \delta$ , to the desired precision (note that  $\delta$  has positive valuation). Alternatively, we can use that on the Kummer surface, we have

$$p^{n-1} \cdot P = (\lambda_1^2 p^{2n} + O(p^{3n}) : 2\lambda_1\lambda_2 p^{2n} + O(p^{3n}) : \lambda_2^2 p^{2n} + O(p^{3n}) : 1)$$

where  $(\lambda_1, \lambda_2)$  is the logarithm of  $P$ . So to compute the logarithm up to  $O(p^n)$ , we multiply the point by  $p^{n-1}$  on the Kummer surface to find the logarithm up to a sign. (If  $p = 2$ , we need a few more bits of precision here.) We then fix the sign by comparing with the first-order approximation we obtain from the functions  $\lambda$  and  $\mu$  on the Jacobian, in the notation of [CF, § 2].

Given that we are able to compute the logarithm

$$\log : J^1(\mathbb{Q}_p) \longrightarrow (p\mathbb{Z}_p)^2$$

to any desired accuracy, we compute the finite-index subgroup  $K_n = J(\mathbb{Q}) \cap J^n(\mathbb{Q}_p)$  of  $J(\mathbb{Q})$  as follows. We assume that  $K_1$  is already given. We can therefore set up the group homomorphism

$$K_1 \xrightarrow{\log} (p\mathbb{Z}_p)^2 \longrightarrow \left( \frac{p\mathbb{Z}_p}{p^n\mathbb{Z}_p} \right)^2 \cong \left( \frac{\mathbb{Z}}{p^{n-1}\mathbb{Z}} \right)^2;$$

then  $K_n$  is just its kernel.

The second and more time-consuming step is to find the image of  $C(\mathbb{Q}_p)$  in  $J(\mathbb{Q}_p)/J^n(\mathbb{Q}_p)$ . We assume again that the ‘flat’ information (i.e., the image of  $C(\mathbb{Q}_p)$  in  $J(\mathbb{Q}_p)/J^1(\mathbb{Q}_p)$ ) is already known. For each point in the intersection of the images of  $C(\mathbb{Q}_p)$  and of  $J(\mathbb{Q})$  inside  $J(\mathbb{Q}_p)/J^1(\mathbb{Q}_p)$ , we then have to find all its ‘liftings’ to elements in the intersection of the images of  $C(\mathbb{Q}_p)$  and of  $J(\mathbb{Q})$  in  $J(\mathbb{Q}_p)/J^n(\mathbb{Q}_p)$ .

One approach would be to take some lifting  $P_0$  in  $C(\mathbb{Q}_p)$ , add representatives of  $J(\mathbb{Q}_p)/J^n(\mathbb{Q}_p)$  to it and see which lie sufficiently close to  $C$ . One practical problem lies in the word ‘add’. By [CF, Ch. 2,3], the Jacobian can be embedded into  $\mathbb{P}^{15}$ , and the sum  $P+Q$  can be expressed in terms of bilinear forms in the coordinates of  $P$  and  $Q$ . For a given curve  $C$ , these forms can be determined using interpolation, but they can have several thousand terms, so any subsequent computations based on them will be rather slow.

The usual method of adding points on  $J$ , following [Ca], essentially uses some affine part of the Jacobian. Problems with denominators make it not well-suited for  $p$ -adic fixed precision calculations.

We instead propose to use the Kummer surface and its dual (see [CF, Ch. 4]). The hyperelliptic involution on  $C$  induces an involution on the principal homogeneous space  $\text{Pic}_C^1$  of  $J$ , and the quotient of  $\text{Pic}_C^1$  by this involution is again a quartic surface in  $\mathbb{P}^3$ . An explicit equation is given by

$$\psi(\eta_1, \eta_2, \eta_3, \eta_4) := \begin{vmatrix} 2f_0\eta_4 & f_1\eta_4 & \eta_1 & \eta_2 \\ f_1\eta_4 & 2f_2\eta_4 - 2\eta_1 & f_3\eta_4 - \eta_2 & \eta_3 \\ \eta_1 & f_3\eta_4 - \eta_2 & 2f_4\eta_4 - 2\eta_3 & f_5\eta_4 \\ \eta_2 & \eta_3 & f_5\eta_4 & 2f_6\eta_4 \end{vmatrix} = 0,$$

see [CF, p. 33]. This model has the property that the natural image of  $C \subset \text{Pic}_C^1$  is given by  $\eta_4 = 0$ . Furthermore, if  $P \in \text{Pic}_C^1$  maps to  $(\eta_1 : \eta_2 : \eta_3 : \eta_4)$  on the dual Kummer surface and  $Q \in J$  maps to  $(\xi_1 : \xi_2 : \xi_3 : \xi_4)$  on the Kummer surface, then  $P \in C \pm Q$  if and only if  $\xi_1\eta_1 + \xi_2\eta_2 + \xi_3\eta_3 + \xi_4\eta_4 = 0$ . We will denote the Kummer surface by  $\mathcal{K}$  and the dual Kummer surface by  $\mathcal{K}^*$ .

The group law on  $J$  leaves its traces on  $\mathcal{K}$ . Suppose that  $Q, R \in J$ . Write  $\mathbf{y} = (\xi_1(Q), \dots, \xi_4(Q))$  and  $\mathbf{z} = (\xi_1(R), \dots, \xi_4(R))$  for projective coordinates of their images on  $\mathcal{K}$ . Following [CF, Ch. 3], there is a matrix of biquadratic forms  $B(\mathbf{y}, \mathbf{z}) = (B_{ij})$  such that

$$2B_{ij} = \xi_i(Q+R)\xi_j(Q-R) + \xi_i(Q-R)\xi_j(Q+R).$$

The action of  $J$  on  $\text{Pic}_C^1$  can be similarly described on  $\mathcal{K}^*$ . Suppose that  $Q \in J$  and  $P \in \text{Pic}_C^1$  and that  $\mathbf{x} = \eta(P)$  and  $\mathbf{y} = \xi(Q)$  are projective coordinates for their images on  $\mathcal{K}^*$  and on  $\mathcal{K}$ , respectively. There is now a symmetric matrix of



biquadratic forms  $A(\mathbf{x}, \mathbf{y}) = (A_{ij})$  such that

$$2A_{ij} = \eta_i(P + Q)\eta_j(P - Q) + \eta_i(P - Q)\eta_j(P + Q).$$

The following result lets us compute  $A$  from  $B$  rather easily. We assume that  $B$  has been scaled so that  $B_{44}(0, 0, 0, 1; 0, 0, 0, 1) = 1$  and  $A$  has been scaled so that  $A_{11}(1, 0, 0, 0; 0, 0, 0, 1) = 1$ .

**Lemma 6.1.** *Let  $\mathbf{x}$  be coordinates of the image of  $P \in \text{Pic}_C^1$  on  $\mathcal{K}^*$ , and let  $\mathbf{y}, \mathbf{z}$  be coordinates of the images of  $Q, R \in J$  on  $\mathcal{K}$ . Then, considering  $\mathbf{x}, \mathbf{y}, \mathbf{z}$  as row vectors,*

$$\mathbf{x} B(\mathbf{y}, \mathbf{z}) \mathbf{x}^\top = \mathbf{z} A(\mathbf{x}, \mathbf{y}) \mathbf{z}^\top.$$

*Proof.* Both sides are triquadratic forms in  $\mathbf{x}, \mathbf{y}, \mathbf{z}$ . Using the duality property mentioned above, it can be checked that each side vanishes if and only if

$$P \in C \pm Q \pm R \quad \text{for some choice of signs.}$$

This implies that both sides are proportional, and since they take the same value 1 at  $\mathbf{x} = (1, 0, 0, 0)$ ,  $\mathbf{y} = \mathbf{z} = (0, 0, 0, 1)$ , they must be equal (since there are no quadrics vanishing on either of the two surfaces).  $\square$

So in order to find  $A$ , we construct the polynomial on the left hand side and interpret it as a quadratic form in  $\mathbf{z}$ .

On the Kummer surface, we can use  $B$  to find the image of  $P + Q$  if the images of  $P, Q$  and  $P - Q$  are known. This is known as ‘pseudo-addition’ (see [FS]) and can be extended to the computation of images of linear combinations  $a_1P_1 + \dots + a_mP_m$  if the images of the  $2^m$  points  $e_1P_1 + \dots + e_mP_m$  are known, where  $e_j \in \{0, 1\}$ . It should be noted that the complexity of this procedure in terms of pseudo-additions is  $2^m$  times the bit-length of the coefficients, so we should not use it to compute linear combinations of many points. One important feature of this is that it works with projective coordinates and is therefore well-suited for  $p$ -adic arithmetic with fixed precision.

In a similar way, we can compute the image of  $P + a_1P_1 + \dots + a_mP_m$  on the dual Kummer surface, if  $P \in \text{Pic}_C^1$  and  $P_1, \dots, P_m \in J$ . We need to know the images of  $P + e_1P_1 + \dots + e_mP_m$  (with  $e_j \in \{0, 1\}$ ) in addition to  $e_1P_1 + \dots + e_mP_m$ , and in the pseudo-addition step,  $B$  is replaced with  $A$ . The remark on complexity applies here as well. Below, we will take generators of the successive quotients  $K_{l-1}/K_l$  as the  $P_j$ ; in most cases, this quotient is isomorphic to a subgroup of  $(\mathbb{Z}/p\mathbb{Z})^2$ , so that  $m \leq 2$ .

The following lemma tells us how to find the subset of  $J(\mathbb{Q}_p)/J^n(\mathbb{Q}_p)$  of elements such that the corresponding cosets of  $J^n(\mathbb{Q}_p)$  meet the image of the curve.

**Lemma 6.2.** *Let  $P_0 \in C(\mathbb{Q}_p)$ , and let  $Q \in J^n(\mathbb{Q}_p)$ . If we normalize the coordinates  $(\eta_1 : \eta_2 : \eta_3 : \eta_4)$  of the image of  $P_0 + Q$  on  $\mathcal{K}^*$  so that the minimal  $p$ -adic valuation is zero, then*

$$v_p(\eta_1\eta_3 - \eta_2^2) \geq n \quad \text{and} \quad v_p(\eta_4) \geq 2n.$$

*Proof.* Let  $P$  be the image on  $\mathcal{K}^*$  of  $P_0 \in C(\mathbb{Q}_p)$ . If we make an invertible coordinate change over  $\mathbb{Z}_p$  on the  $\mathbb{P}^1$  that  $C$  maps to, then this induces an invertible coordinate change over  $\mathbb{Z}_p$  on the ambient projective spaces of  $\mathcal{K}$  and of  $\mathcal{K}^*$ , which leaves the valuations of  $\eta_1\eta_3 - \eta_2^2$  and of  $\eta_4$  invariant. We can therefore assume without loss of generality that the point on the curve is at infinity. Then  $P = (1 : 0 : 0 : 0)$ .

Since  $Q \in J^n(\mathbb{Q}_p)$ , its image on  $\mathcal{K}$  has coordinates of the form

$$(\alpha p^{2n} : \beta p^{2n} : \gamma p^{2n} : 1) \quad \text{with } \alpha, \beta, \gamma \in \mathbb{Z}_p.$$

Denote the coordinates of the images of  $P_0 \pm Q$  on  $\mathcal{K}^*$  by  $(\eta_1 : \eta_2 : \eta_3 : \eta_4)$  and  $(\eta'_1 : \eta'_2 : \eta'_3 : \eta'_4)$ . If we evaluate the entries of the matrix  $A$  at the coordinates of  $P$  and  $Q$ , then by the definition of  $A$  we have (with suitable scaling)

$$2A(P, Q) = (\eta_1, \eta_2, \eta_3, \eta_4)^\top (\eta'_1, \eta'_2, \eta'_3, \eta'_4) + (\eta'_1, \eta'_2, \eta'_3, \eta'_4)^\top (\eta_1, \eta_2, \eta_3, \eta_4).$$

We obtain

$$\eta_1\eta'_1 = A(P, Q)_{11} \equiv 1 \pmod{p^{2n}},$$

so that we can scale the coordinates to have

$$\eta_1 \equiv \eta'_1 \equiv 1 \pmod{p^{2n}}.$$

We then find that

$$\eta_4 + \eta'_4 \equiv 2A(P, Q)_{14} \equiv 0 \pmod{p^{2n}} \quad \text{and} \quad \eta_4\eta'_4 = A(P, Q)_{44} \equiv 0 \pmod{p^{4n}};$$

this implies that

$$\eta_4 \equiv \eta'_4 \equiv 0 \pmod{p^{2n}}.$$

All entries in  $A(P, Q)$ , except  $A_{11}$ , have valuation at least  $2n$ . It follows in a similar way as above that

$$\eta_2, \eta'_2, \eta_3, \eta'_3 \equiv 0 \pmod{p^n}$$

and therefore that

$$\eta_1\eta_3 - \eta_2^2 \equiv \eta'_1\eta'_3 - \eta'^2_2 \equiv 0 \pmod{p^n}$$

as claimed.  $\square$

Recall that we have fixed an embedding  $\iota : C \rightarrow J$ , given by some rational divisor (class) of degree 1 on  $C$ . This induces an isomorphism  $\iota : \text{Pic}_C^1 \xrightarrow{\cong} J$ . So in order to test whether an element of  $J(\mathbb{Q})/K_n$  is in the image of  $C(\mathbb{Q}_p)$ , we map a

representative in  $J(\mathbb{Q})$  to  $\text{Pic}_C^1$  via  $\iota^{-1}$  and then to the dual Kummer surface, and check whether the normalized coordinates of the image satisfy

$$v_p(\eta_4) \geq 2n \quad \text{and} \quad v_p(\eta_1\eta_3 - \eta_2^2) \geq n.$$

Note that we can compute the image on the dual Kummer surface if we know the images of  $e_1P_1 + \cdots + e_mP_m$  on  $\mathcal{K}$  and on  $\mathcal{K}^*$ , where the  $P_j$  are representatives of generators of  $J(\mathbb{Q})/K_n$  (with  $e_j \in \{0, 1\}$ ).

If we proceed as just described, then we need to enumerate  $J(\mathbb{Q})/K_n$  (of size approximately  $p^{2n}$ ) in order to find the image of  $C$ , which is of size approximately  $p^n$ . We can make several improvements in order to reduce the complexity to something closer to the lower bound of  $O(p^n)$ . One improvement is to compute the images successively for  $n = 2, 3, \dots$ . When we go from  $n = m$  to  $n = m + 1$ , we only have to consider group elements that map into the image of the curve on the previous level; there will usually be  $p^2$  of these for each of the roughly  $p^m$  elements in the previous image. This gives a complexity of  $p^{m+2}$  for this step, and a total complexity of  $\frac{p^2}{p-1} p^n$ . This is still worse by a factor of  $p^2/(p-1)$  than what we would get if we could compute the images of points in  $C(\mathbb{Q}_p)$  in  $J(\mathbb{Q}_p)/J^n(\mathbb{Q}_p)$  directly, but it is reasonably good for applications.

We can further improve on this in many cases. Let  $P \in J(\mathbb{Q})$  such that its image on  $\mathcal{K}^*$  satisfies  $v_p(\eta_1\eta_3 - \eta_2^2) \geq m$  as above. We work in an affine patch of  $\mathcal{K}^*$  such that the image of  $P$  has  $p$ -adically integral coordinates and write  $h(P)$  for the function  $\eta_1\eta_3 - \eta_2^2$ , evaluated at  $P$  in terms of these affine coordinates. The theory of formal groups implies that the map

$$J^m(\mathbb{Q}_p) \longrightarrow \mathbb{F}_p, \quad Q \longmapsto p^{-m}(h(P+Q) - h(P)) \bmod p$$

is linear, with kernel containing  $J^{m+1}(\mathbb{Q}_p)$ . This gives us a linear form  $\ell_m : K_m/K_{m+1} \rightarrow \mathbb{F}_p$ . If  $\ell_m$  is nonzero, then we only need to evaluate it on a generating set of  $K_m/K_{m+1}$  in order to find the points  $Q \in K_m$  such that  $v_p(h(P+Q)) \geq m+1$ . Since  $K_m/K_{m+1}$  usually has two generators, this gives a complexity of order  $(2+p)p^m$ : for each of the roughly  $p^m$  points  $P$ , we have to evaluate  $\ell_m$  on the two generators and then compute the (usually)  $p$  lifts to the next level. Note that the linear form is nonzero on  $J^m(\mathbb{Q}_p)/J^{m+1}(\mathbb{Q}_p)$  if and only if the reduction mod  $p$  of the image of  $P$  on  $\mathcal{K}^*$  is nonsingular. This is the case unless  $p = 2$  or the corresponding point in  $C(\mathbb{F}_p)$  has vanishing  $y$ -coordinate. So if  $p$  is an odd prime such that the polynomial defining  $C$  is not divisible by  $p$ , there will be at most six ‘problematic’ classes mod  $p$ , contributing at most  $6p^2$  to the complexity at each step. The overall complexity is therefore  $O(p^n)$  for such primes, which is of the order of the obvious lower bound.

## 7. IMPLEMENTATION

In this section, we describe a concrete implementation of the Mordell-Weil sieve on genus 2 curves that can be used to prove that a given curve does not have a rational point. For this implementation, the MAGMA computer algebra system [M] was used.

We assume that we are given as input

- (1) the polynomial  $f(x)$  on the right hand side of the equation  $y^2 = f(x)$  of the curve  $C$ ,
- (2) generators of the Mordell-Weil group  $J(\mathbb{Q})$ , where  $J$  is the Jacobian variety of the curve, and
- (3) a rational divisor  $D$  of degree 3 on the curve.

The latter is used to provide the embedding  $\iota : C \rightarrow J$ , which is given by sending a point  $P \in C$  to the class of  $P + W - D$ , where  $W$  is a canonical divisor.

Elements of  $J(\mathbb{Q})$  can be represented by divisors of degree 2, and divisors can be represented by pairs  $(a, b)$  of polynomials as in Section 5 above. We let  $r$  denote the rank of  $J(\mathbb{Q})$ .

In the first step, we have to provide the necessary input for the actual sieving procedure. This means that we have to determine the group structure of  $J(\mathbb{F}_p)$ , the reduction homomorphism  $\phi_p : J(\mathbb{Q}) \rightarrow J(\mathbb{F}_p)$ , and the image of  $C(\mathbb{F}_p)$  in  $J(\mathbb{F}_p)$  in terms of this group structure. This involves the computation of  $r + t + \#C(\mathbb{F}_p)$  discrete logarithms in the group  $J(\mathbb{F}_p)$ , where  $r$  is the Mordell-Weil rank and  $t$  is the number of generators of the torsion subgroup of  $J(\mathbb{Q})$ . The first  $r + t$  of these are needed to find  $\phi_p$ , and the others are needed to find the image of  $C(\mathbb{F}_p)$  in  $J(\mathbb{F}_p)$ , represented by the abstract group  $G_p$ . If we restrict to primes  $p$  such that  $\#J(\mathbb{F}_p)$  is  $B$ -smooth, then we can use Pohlig-Hellman reduction [PH] for the computation of the discrete logarithms, so that the complexity of this step is about  $r + t + \#C(\mathbb{F}_p)$  (assuming  $B$  is fixed). The total effort required for the computation in the first step is therefore

$$\approx (r + t)\#S + \sum_{p \in S} \#C(\mathbb{F}_p) \approx (r + t)\#S + \sum_{p \in S} p \approx (r + t + \frac{1}{2} \max S)\#S.$$

In the last estimate, we have made the simplifying assumption that the primes in  $S$  are distributed fairly regularly, so the factor  $\frac{1}{2}$  will not be completely accurate. The point is that this is essentially quadratic in  $\#S$  or  $\max S$ . So the relevant question is how far we have to go with  $\max S$  in order to collect enough information to make success likely.

A reliable theoretical analysis of this question appears to be rather difficult, although one could try to get some information out of an approach along the lines of Poonen's heuristic [Po]. Therefore we use the following approach. We compute

the relevant information for each prime  $p$  (such that  $\#J(\mathbb{F}_p)$  is  $B$ -smooth) in turn. Then we compute the numbers  $n(S, N_{l-1-r-j})$  for  $j = 0, 1, 2, 3$  in the notation of Section 3.1, where  $S$  is the set of primes used so far. This can be done incrementally, caching the values of  $\#C_{N,p}/\#(G_p/NG_p)$  for later use (they only depend on the gcd of  $N$  and the exponent of  $G_p$ ), and does not cost much time. We stop this part of the computation when

$$\min_j n(S, N_{l-1-r-j}) < \varepsilon$$

for a given parameter  $\varepsilon \ll 1$ . Tests performed with the ‘small curves’ from [BS1] indicate that  $\varepsilon = 0.01$  is a reasonable choice and that  $B = 200$  leads to good results. Figure 2 shows the dependence of  $n(S, N_{l-1-r-j})$  from  $\max S$  in a fairly typical example (of rank 3).

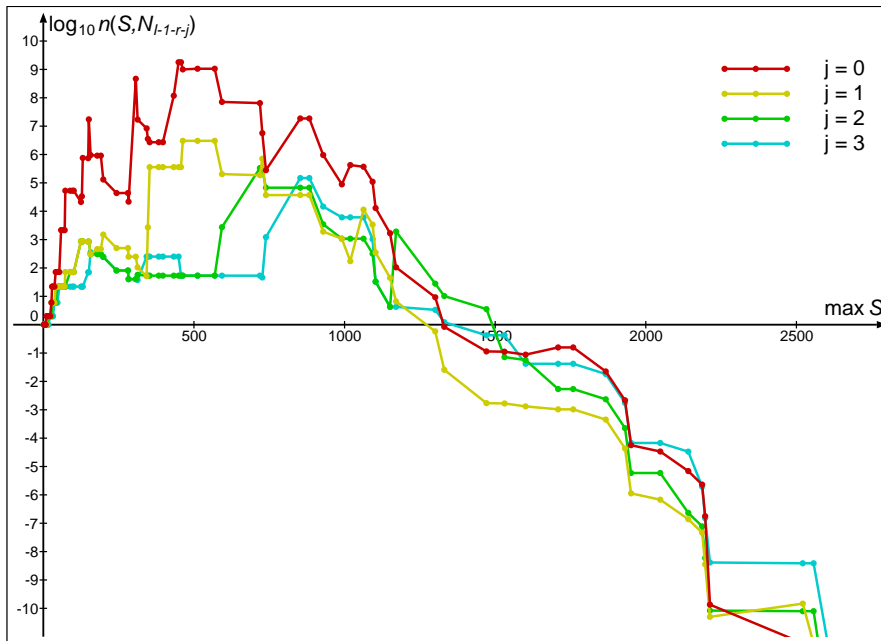


FIGURE 2. Expected sizes  $n(S, N_{l-1-r-j})$  versus  $\max S$

We include the computation of ‘bad’ and ‘deep’ information (as described in Sections 5 and 6 above) as we go along. We let  $n = 2, 3, 4, \dots$ , and when  $n = p$  is a prime, we compute information mod  $p$  if  $p < 10$ , or  $p \leq B$  and the given model of  $C$  is regular at  $p$  such that  $C/\mathbb{F}_p$  has only one component, or  $p$  is a prime of good reduction and  $\#J(\mathbb{F}_p)$  is  $B$ -smooth. If  $n = p^v$  is a prime power  $p^v$ , then we compute information mod  $p^m$  with  $m = (v + 1)/2$  if  $v$  is odd. This scheme proved to give the best performance with our implementation. It hits a good balance between the effort required to compute the information (which is much greater

than for ‘flat’ and ‘good’ information at primes  $q \approx p^m$ ) and the gain in speed resulting from the additional information. The information mod  $p^m$  is therefore computed in the following order.

$$p^m = 2, 3, 5, 7, 2^2, 11, 13, 17, 19, 23, 3^2, 29, 31, 2^3, 37, \dots$$

After the information has been collected, we compute a ‘ $q$  sequence’ as described in Section 3.2, using a target value of  $\varepsilon_1$  with  $\varepsilon < \varepsilon_1 < 1$ . We take  $\varepsilon_1 = 0.1$  as the standard value of this parameter. Since  $\varepsilon_1 > \varepsilon$ , we know from the first part of the computation that a suitable sequence exists. If we take  $\varepsilon_1$  not too close to  $\varepsilon$ , this second part of the computation is usually rather fast.

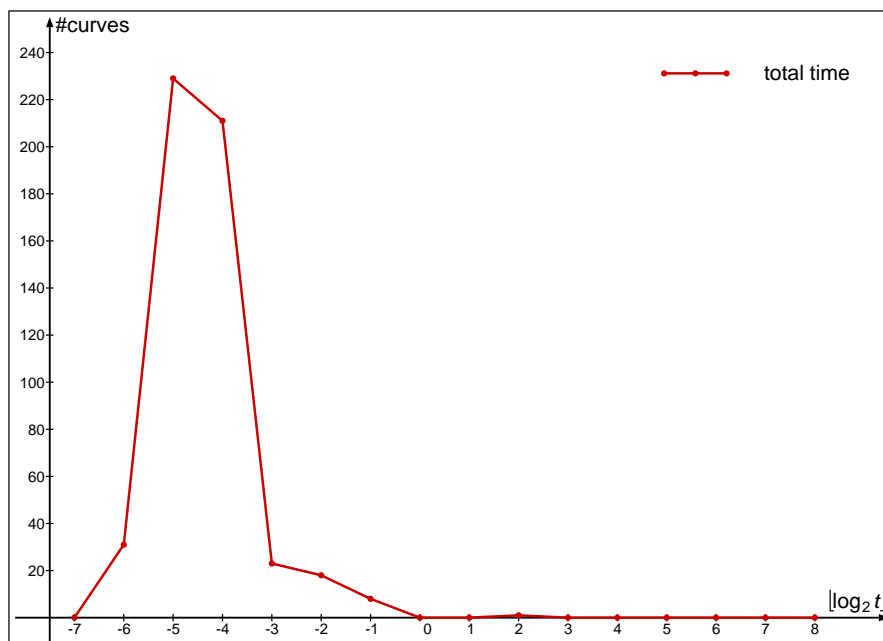
Finally, we use the collection  $\{(G_p, \phi_p, C_p) : p \in S\}$  and the  $q$  sequence as input for the actual sieve computation. This computation is done as described in Section 3.3. If it does not result in the desired contradiction, we divide the  $\varepsilon$  and  $\varepsilon_1$  parameters by 10 and start over (keeping the local information we have already computed).

## 8. EFFICIENCY

How long do our computations take? Let us look at the various steps that have to be performed, in the context of the first application discussed in Section 4 above: verifying that a given curve  $C$  of genus 2 over  $\mathbb{Q}$  does not have rational points. We assume that a Mordell-Weil basis is known. Note that in practice, the part of the computation that determines this Mordell-Weil basis can be rather time-consuming, but this is a different problem, which we will not consider here. See [St2, St1, St3] for the relevant algorithms. We also assume that we know a rational divisor of degree 3 on  $C$ . Again, it might be not so easy to find such a divisor in practice. This is discussed in some detail in [BS3].

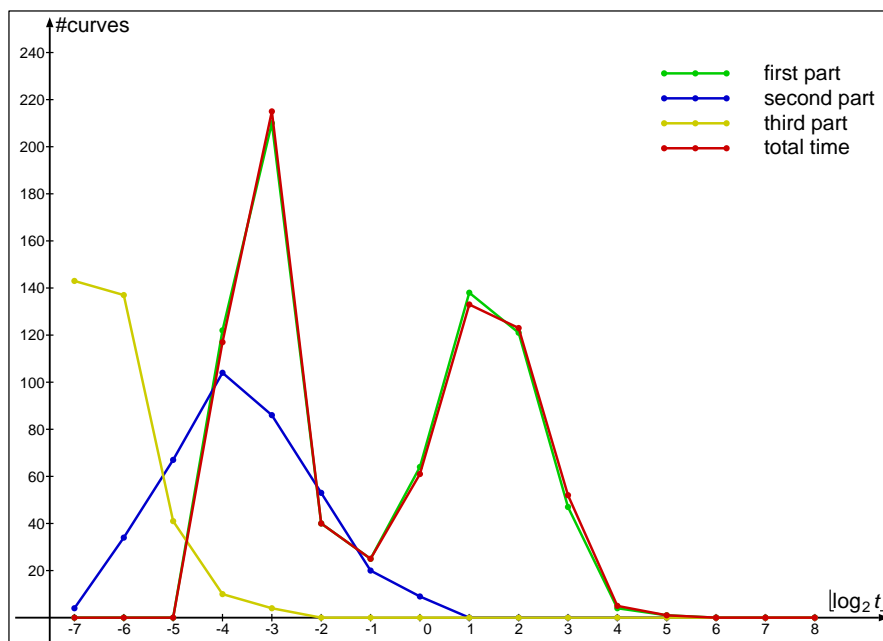
We consider the 1447 curves for which we had to perform a Mordell-Weil sieve computation in [BS1] in order to rule out the existence of rational points. The difference to the 1492 curves mentioned earlier comes from the fact that some curves had rank zero, and some others could be ruled out immediately by the information coming from the Birch and Swinnerton-Dyer conjecture. The timings mentioned below were obtained on a machine with 4 GB of RAM and a 2.0 GHz dual core processor. As before,  $r$  denotes the Mordell-Weil rank.

Among the 521 curves with  $r = 1$ , there are 514 such that we already obtain a contradiction while collecting the information. This occurs when we find a prime  $p$  or prime power  $p^n$  such that the images of  $J(\mathbb{Q})$  and of  $C(\mathbb{Z}/p^n/\mathbb{Z})$  in  $J(\mathbb{Z}/p^n\mathbb{Z})$  are disjoint. It is perhaps worth noting that without looking at ‘bad’ and ‘deep’ information, we obtain this kind of immediate contradiction only for 406 curves. The average computing time for a single curve was about 0.1 seconds, and the longest time was about 6.3 seconds. The distribution of running times is shown in Figure 3 (on a logarithmic scale).

FIGURE 3. Running times for  $r = 1$ 

There are 772 curves with  $r = 2$ . For 394 among them, we obtain a contradiction from one prime or prime power alone. The average computing time for these curves was 0.24 seconds with a maximum of 6.4 seconds. For the remaining curves, the average total computing time was 4.9 seconds, with a maximum of 51.8 seconds. The distribution of the running times (overall and for the various parts of the computation) is shown in Figure 4. The two peaks essentially correspond to the two groups of curves. The largest size of a set  $A(L)$  that occurred in the computation was 236, the average of this maximum size in each computation was 6.1. Note that the inclusion of ‘bad’ and ‘deep’ information results in a speed-up by roughly a factor two.

There are 152 curves with  $r = 3$ . For 14 curves, we still find a contradiction from the local information at one prime alone. The average total time was 34.3 seconds, the maximum was about 5.6 minutes. The first step took 28.1 seconds on average. For the curves where the second and third steps were performed, the second step took 2.3 seconds and the third step 4.6 seconds on average. The distribution of the running times (overall and for the various steps) is shown in Figure 5. The largest size of a set  $A(L)$  was 251 148 (occurring for the curve with the largest running time), the average was 5049. For these curves, the computation is infeasible without using ‘bad’ and ‘deep’ information, since otherwise the sets  $A(L)$  occurring in the last part of the computation get much too large.

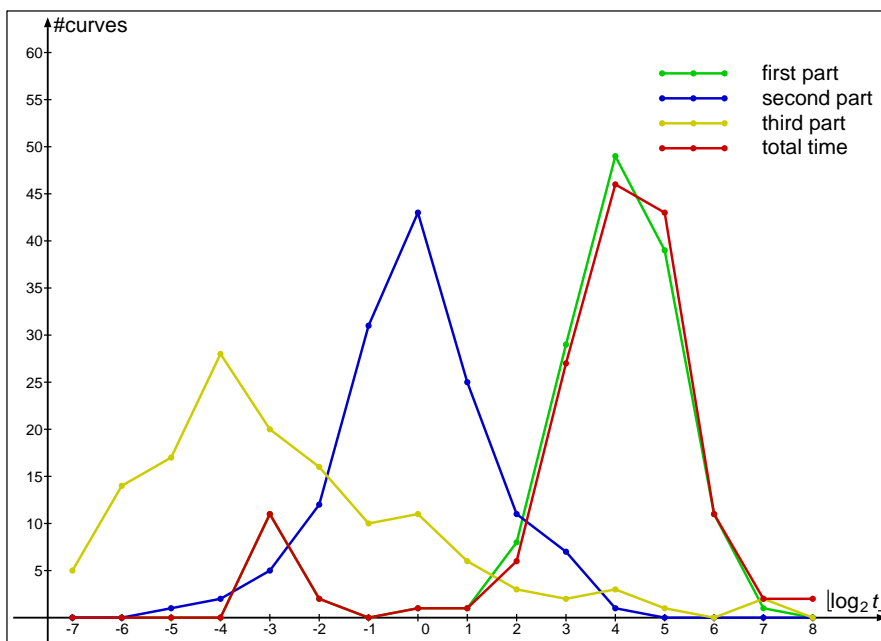
FIGURE 4. Running times for  $r = 2$ 

There are only two curves with  $r = 4$ . One of them is ‘hard’ and the other one is ‘easy’. For the ‘hard’ curve, the computation takes about 26 minutes with the standard settings (ca. 2 min for the first step, 10 seconds for the second and the remaining 24 min for the sieving step). This is mostly due to the large size of the sets  $A(L)$  (up to more than 2 million) occurring in this computation. If we change the parameters so that deep information mod  $p^n$  is used for all  $p^n < 520$ , then the computation takes less than 12 minutes (3 min, 10 sec, 8.5 min), and the largest set  $A(L)$  has size only about 750 000. The ‘easy’ curve is dealt with in 47 seconds (44.5 sec, 2 sec, 0.5 sec) using the standard settings.

From these data, we conclude that our current implementation works well for curves with Jacobians of Mordell-Weil rank  $r \leq 3$ . For larger rank, there is so far only sparse evidence from examples, suggesting that individual curves with  $r$  as large as 6 are still within the range of feasibility. In any case, it is clear that average running times increase quickly with  $r$ .

Our timings also show that the first part of the computation (gathering the local information) usually takes the lion’s share of the total time. Improvements in this part (and faster discrete logarithm computations in particular) would result in a noticeable speedup of the procedure as a whole.



FIGURE 5. Running times for  $r = 3$ 

## REFERENCES

- [BW] A. BAKER and G. WÜSTHOLZ: *Logarithmic forms and Diophantine geometry*. New Mathematical Monographs, **9**. Cambridge University Press, Cambridge, 2007.
- [Br] N. BRUIN: *The arithmetic of Prym varieties in genus 3*, *Compositio Math.* **144**, no. 2, 317–338 (2008).
- [BE] N. BRUIN and NOAM D. ELKIES: *Trinomials  $ax^7 + bx + c$  and  $ax^8 + bx + c$  with Galois groups of order 168 and  $8 \cdot 168$* , in Claus Fieker, David R. Kohel (Eds.): *Algorithmic Number Theory, 5th International Symposium, ANTS-V*, Lecture Notes in Computer Science **2369**, Springer 2002, pp. 172–188.
- [BS1] N. BRUIN and M. STOLL: *Deciding existence of rational points on curves: an experiment*, *Experiment. Math.* **17**, 181–189 (2008).
- [BS2] N. BRUIN and M. STOLL: *2-cover descent on hyperelliptic curves*, to appear in *Math. Comp.* (2009). DOI: 10.1090/S0025-5718-09-02255-8. Published online 2009-03-11.
- [BS3] N. BRUIN and M. STOLL: *Finding Mordell-Weil generators on genus 2 Jacobians*, in preparation.
- [BMSST] Y. BUGEAUD, M. MIGNOTTE, S. SIKSEK, M. STOLL and SZ. TENGYEL: *Integral points on hyperelliptic curves*, *Algebra Number Theory* **2**, No. 8, 859–885 (2008).
- [Ca] DAVID G. CANTOR: *Computing in the Jacobian of a hyperelliptic curve*, *Math. Comp.* **48**, 95–101 (1987).
- [CF] J.W.S. CASSELS and E.V. FLYNN: *Prolegomena to a middlebrow arithmetic of curves of genus 2*, Cambridge University Press, Cambridge (1996).
- [Ch] C. CHABAUTY: *Sur les points rationnels des courbes algébriques de genre supérieur à l'unité* (French), *C. R. Acad. Sci. Paris* **212**, 882–885 (1941).
- [Co] R.F. COLEMAN: *Effective Chabauty*, *Duke Math. J.* **52**, 765–770 (1985).

- [F11] E.V. FLYNN: *A flexible method for applying Chabauty's theorem*, *Compositio Math.* **105**, 79–94 (1997).
- [F12] E.V. FLYNN: *The Hasse Principle and the Brauer-Manin obstruction for curves*, *Manuscripta Math.* **115**, 437–466 (2004).
- [F13] <http://people.maths.ox.ac.uk/~flynn/genus2/>
- [FS] E.V. FLYNN and N.P. SMART: *Canonical heights on the Jacobians of curves of genus 2 and the infinite descent*, *Acta Arith.* **79**, no. 4, 333–352 (1997).
- [M] MAGMA is described in W. BOSMA, J. CANNON and C. PLAYOUST: *The Magma algebra system I: The user language*, *J. Symb. Comp.* **24**, 235–265 (1997). (Also see the Magma home page at <http://www.maths.usyd.edu.au:8000/u/magma/>.)
- [Ma] T. MATEV: *The p-adic analytic subgroup theorem and applications to Chabauty's method*, *Manuscript* (2009).
- [McCP] W. MCCALLUM and B. POONEN, *The method of Chabauty and Coleman*, Preprint (2007). Available at <http://www-math.mit.edu/~poonen/papers/chabauty.pdf>
- [PH] G.C. POHLIG and M.E. HELLMAN: *An improved algorithm for computing logarithms over  $\text{GF}(p)$  and its cryptographic significance*, *IEEE Trans. Information Theory* **IT-24**, 106–110 (1978).
- [Po] B. POONEN: *Heuristics for the Brauer-Manin obstruction for curves*, *Experiment. Math.* **15**, 415–420 (2006).
- [PSS] B. POONEN, E.F. SCHAEFER and M. STOLL: *Twists of  $X(7)$  and primitive solutions to  $x^2 + y^3 = z^7$* , *Duke Math. J.* **137**, 103–158 (2007).
- [Sc] V. SCHARASCHKIN: *Local-global problems and the Brauer-Manin obstruction*, Ph.D. thesis, University of Michigan (1999).  
See also *The Brauer-Manin obstruction for curves*, *Manuscript* (1998).
- [St1] M. STOLL: *On the height constant for curves of genus two*, *Acta Arith.* **90**, 183–201 (1999).
- [St2] M. STOLL: *Implementing 2-descent on Jacobians of hyperelliptic curves*, *Acta Arith.* **98**, 245–277 (2001).
- [St3] M. STOLL: *On the height constant for curves of genus two, II*, *Acta Arith.* **104**, 165–182 (2002).
- [St5] M. STOLL: *Independence of rational points on twists of a given curve*, *Compositio Math.* **142**, 1201–1214 (2006).
- [St6] M. STOLL: *Finite descent obstructions and rational points on curves*, *Algebra Number Theory* **1**, 349–391 (2007).
- [St7] M. STOLL: *Applications of the Mordell-Weil sieve*, *Oberwolfach Report 34/2007*, *Oberwolfach Reports* **4**, no. 3, 1967–1970 (2007).
- [St8] M. STOLL: *How to obtain global information from computations over finite fields*, In: *Higher-dimensional geometry over finite fields*, *NATO Science for Peace and Security Series: Information and Communication Security* **16**, (D. KALEDIN, Y. TSCHINKEL, eds.), p. 189–196, *IOS Press* (2008).

DEPARTMENT OF MATHEMATICS, SIMON FRASER UNIVERSITY, BURNABY, BC, CANADA V5A 1S6

*E-mail address:* [nbruin@cecm.sfu.ca](mailto:nbruin@cecm.sfu.ca)

MATHEMATISCHES INSTITUT, UNIVERSITÄT BAYREUTH, 95440 BAYREUTH, GERMANY.

*E-mail address:* [Michael.Stoll@uni-bayreuth.de](mailto:Michael.Stoll@uni-bayreuth.de)